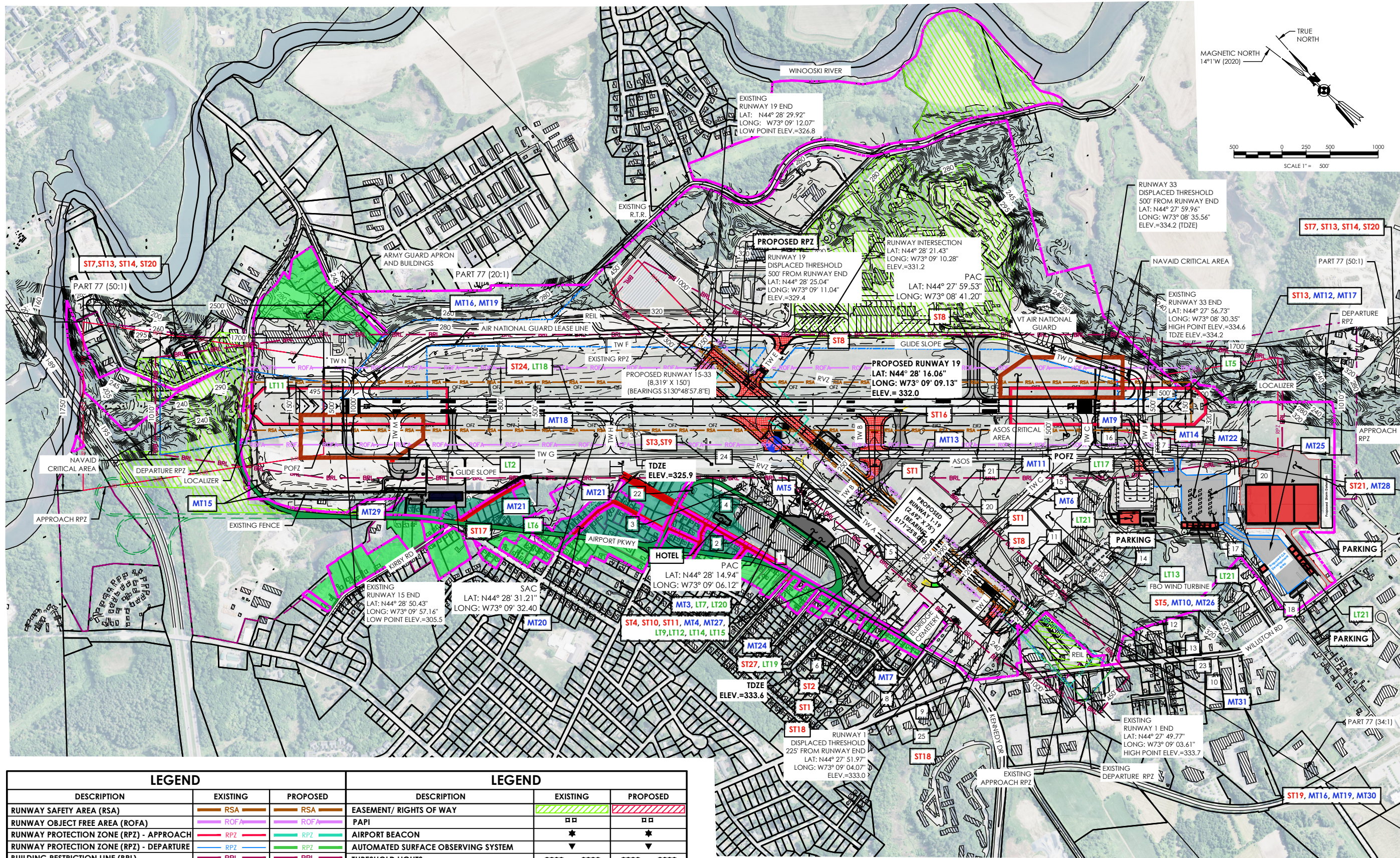


Y:\Projects-New\2015\20150403\20150403.0002 - AMP\UDrawings\Airport\04 proposed ALP (Projects By Term) (rev 4).dwg, 12/28/2021 10:18:54 AM, WZlan



Client:
BURLINGTON INTERNATIONAL AIRPORT
 1200 Airport Drive
 South Burlington, VT 05403

Passero Associates
 242 W. Main Street
 Rochester, NY 14614
 (585) 325-1000
 Fax: (585) 325-1691
 Principal-in-Charge: Andrew Holesko
 Project Manager: Lisa Chueng
 Designed by: Wayne Zian

Revisions			
No.	Date	By	Description

LEGEND		
DESCRIPTION	EXISTING	PROPOSED
RUNWAY SAFETY AREA (RSA)		
RUNWAY OBJECT FREE AREA (ROFA)		
RUNWAY PROTECTION ZONE (RPZ) - APPROACH		
RUNWAY PROTECTION ZONE (RPZ) - DEPARTURE		
BUILDING RESTRICTION LINE (BRL)		
AIR NATIONAL GUARD LEASE LINE		
AIRPORT REFERENCE POINT		
EXISTING BUILDINGS		
AIRPORT PROPERTY LINE		
EXISTING FENCE (8' HEIGHT)		
EXISTING PAVEMENT		
REMOVE PAVEMENT	N/A	
GROUND ELEVATION CONTOURS		
ILS/APPROACH LIGHT CRITICAL AREAS		

LEGEND		
DESCRIPTION	EXISTING	PROPOSED
EASEMENT/ RIGHTS OF WAY		
PAPI		
AIRPORT BEACON		
AUTOMATED SURFACE OBSERVING SYSTEM		
THRESHOLD LIGHTS		
WINDSOCK		
PROPOSED ROADWAYS	N/A	
ACQUIRE AND CONVERT TO AIRPORT DEVELOPMENT LAND	N/A	
RETAIN AND CONVERT TO AIRPORT DEVELOPMENT LAND	N/A	
RETAIN AND CONVERT TO AIRPORT NOISE BUFFER	N/A	
PAVEMENT		

- NOTE:**
1. PROPOSED I-89 CONNECTION SHOWN FOR PLANNING USE BY OTHERS IN REGIONAL STUDIES.
 2. ANY MISSING NUMBERS IN PROJECT TABLES, ARE EITHER EQUIPMENT PURCHASES OR STUDIES.

THE FAA'S APPROVAL OF THIS ALP REPRESENTS ACCEPTANCE OF THE GENERAL LOCATION OF FUTURE FACILITIES DEPICTED DURING THE PRELIMINARY DESIGN PHASE. THE AIRPORT OWNER IS REQUIRED TO SUBMIT FOR APPROVAL THE FINAL LOCATIONS, HEIGHT, AND EXTERIOR FINISHES OF STRUCTURES. THE FAA'S CONCERN IS OBSTRUCTIONS, IMPACT TO ELECTRONIC AIDS OR ADVERSE EFFECTS ON CONTROLLER VIEW OF AIRCRAFT APPROACH, AND GROUND MOVEMENT AREAS WHICH COULD ADVERSELY AFFECT THE SAFETY, EFFICIENCY, OR UTILITY OF THE AIRPORT.

Proposed ALP
 Airport Layout Plan Update
Burlington International Airport (BTV)
 Town/City: South Burlington
 County: CHITTENDEN State: Vermont
 Project No.
20150403.0002
 Drawing No.
4
 Date
January 2021