

Appendix E:
ALP Set

DRAFT

Pending FAA Review

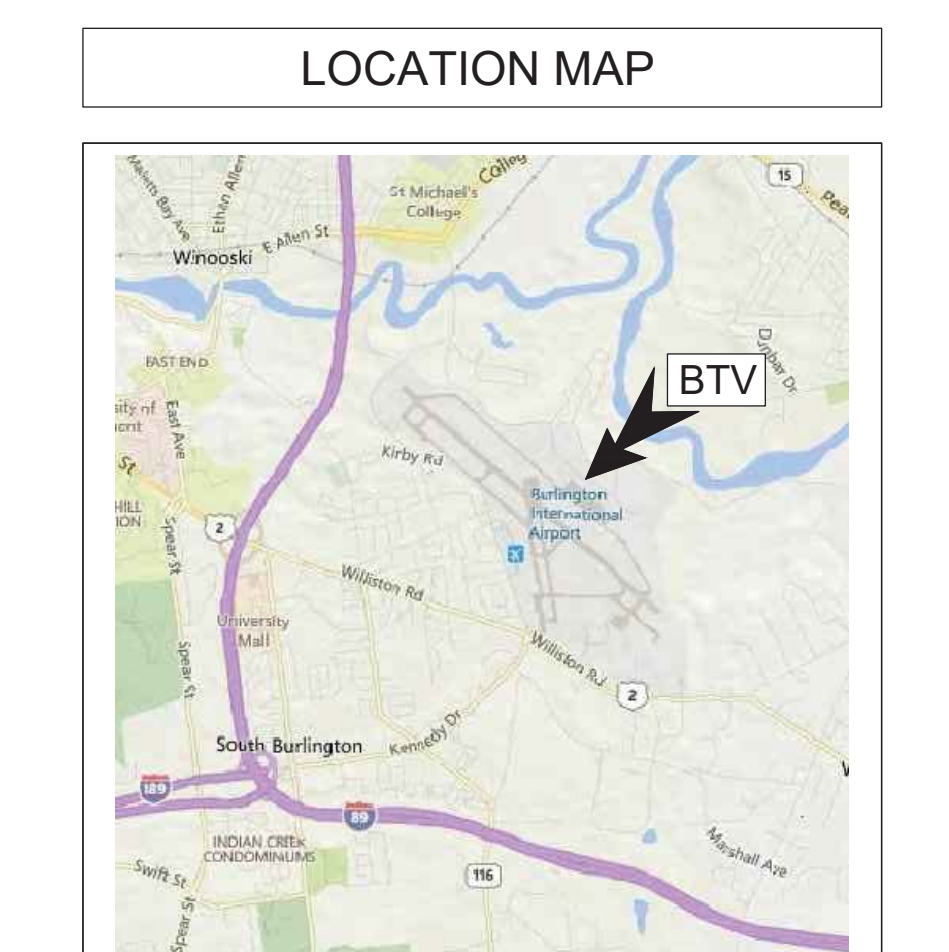
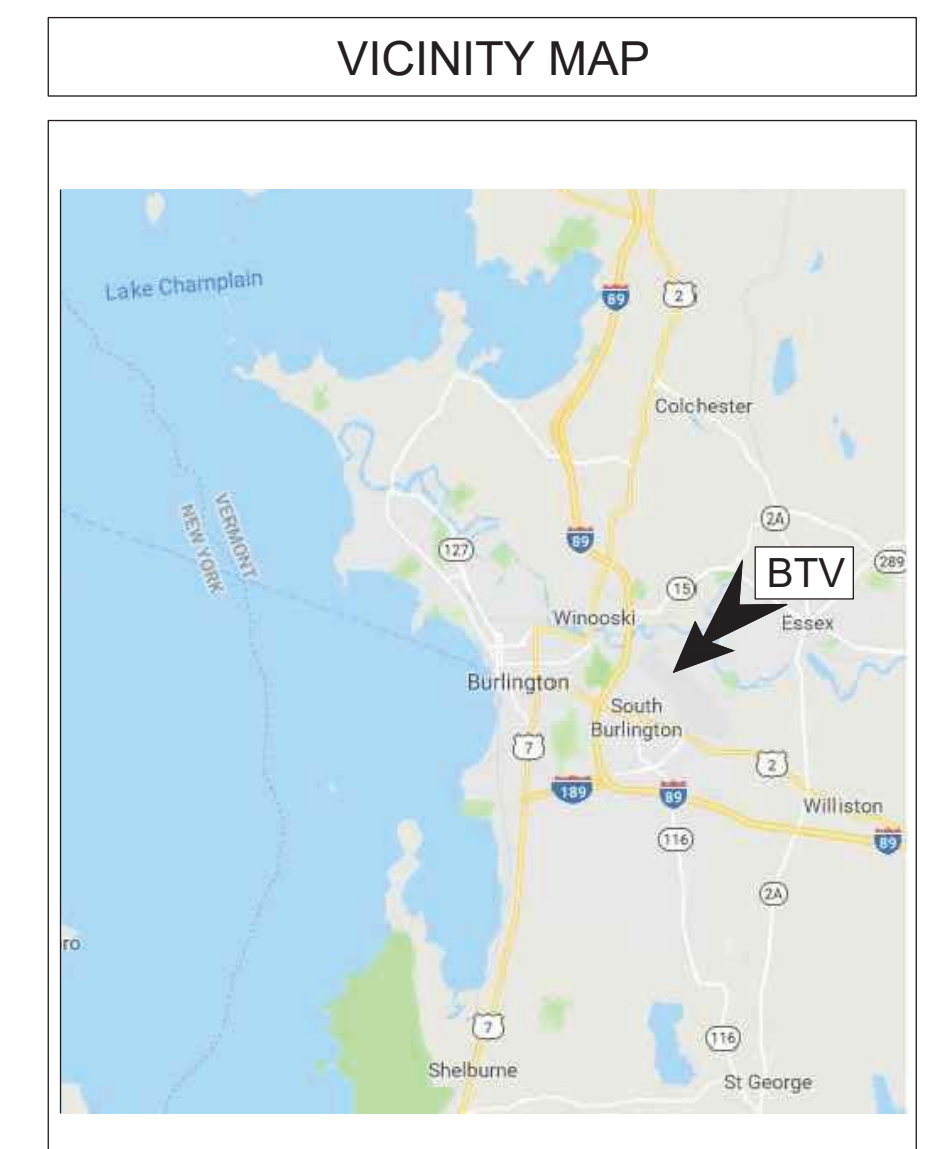
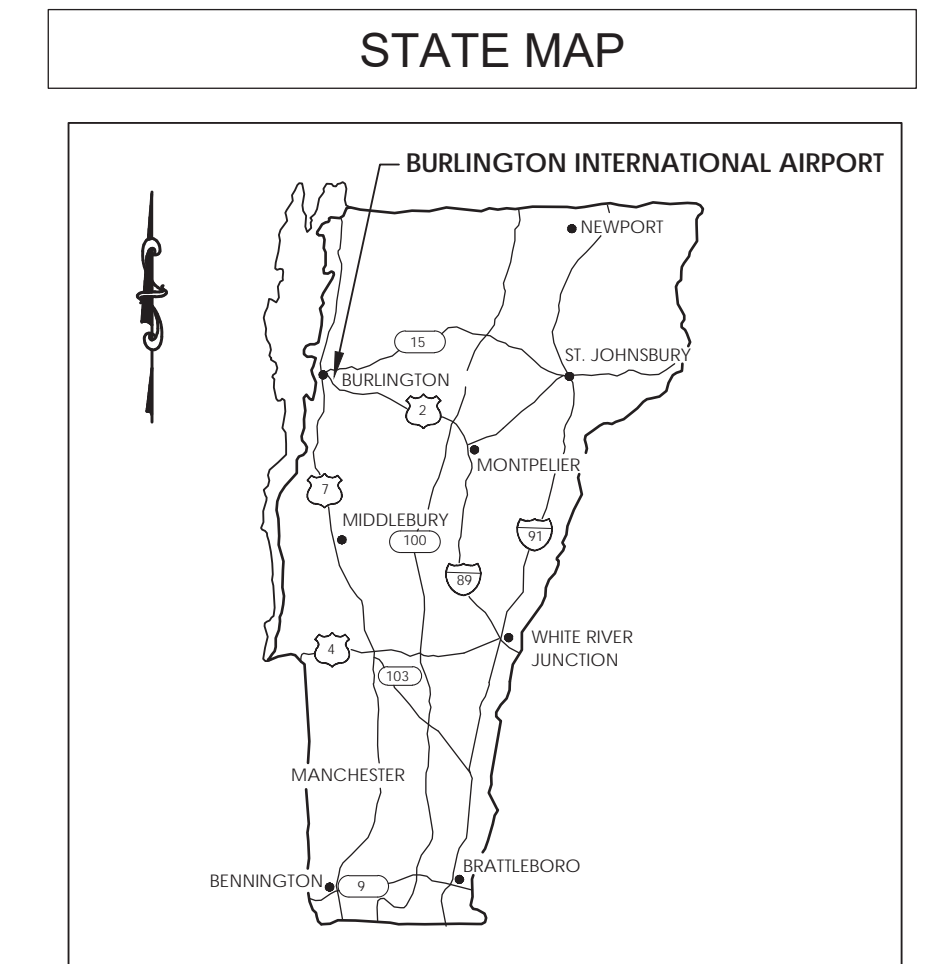
Airport Layout Plan

Burlington International Airport (BTV)



Prepared For:
Burlington International Airport
 Prepared By:
Passero Associates

Updated January 2021
 FAA AIP Grant#: 3-50-0005-113-2018



INDEX OF DRAWINGS

- 1 COVER SHEET
- 2 AIRPORT DATA SHEET
- 3 EXISTING FACILITIES DRAWING
- 4 AIRPORT LAYOUT PLAN
- 4A AIRPORT LAYOUT PLAN TABLES
- 5A TERMINAL AREA PLAN
- 5B TERMINAL AREA PLAN
- 6A AIRSPACE PLAN
- 6B AIRSPACE PROFILE
- 6C HORIZONTAL PLAN
- 6D CONICAL SURFACE PLAN
- 7A INNER PORTION OF THE RUNWAY 15 PLAN
- 7B INNER PORTION OF THE RUNWAY 15 PROFILE
- 8A INNER PORTION OF THE RUNWAY 33 PLAN
- 8B INNER PORTION OF THE RUNWAY 33 PROFILE
- 9A INNER PORTION OF THE RUNWAY 1 PLAN
- 9B INNER PORTION OF THE RUNWAY 1 PROFILE
- 10 INNER PORTION OF THE RUNWAY 19 PLAN AND PROFILE (EXISTING)
- 11A INNER PORTION OF THE RUNWAY 19 PLAN AND PROFILE (FUTURE)
- 11B APPROACH OFFSET RUNWAY 1 PLAN
- 11C APPROACH OFFSET RUNWAY 1 PROFILE
- 12A DEPARTURE SURFACE 15 PLAN
- 12B DEPARTURE SURFACE 15 PROFILE
- 13A DEPARTURE SURFACE 33 PLAN
- 13B DEPARTURE SURFACE 33 PROFILE
- 14 DEPARTURE SURFACE RUNWAY 1
- 14A DEPARTURE SURFACE RUNWAY 1 PLAN AND PROFILE (FUTURE)
- 15 LAND USE PLAN
- 16 AIRPORT PROPERTY MAP (PREPARED UNDER SEPARATE COVER: JONES PAYNE GROUP)

On behalf of Passero Associates, this Airport Layout Plan (ALP) was prepared for the Burlington International Airport according to the applicable Advisory Circulars and ARP SOP 2.00, and accurately depicts the proposed use of airspace at the time of submittal. The ALP conforms with FAA design standards, except as noted.

ALP PREPARED BY	SPONSOR REVIEW	VERMONT DEPARTMENT OF TRANSPORTATION	FEDERAL AVIATION ADMINISTRATION
Passero Associates	Burlington International Airport		

Signature of Approval	Date	Signature of Approval	Date

THE FAA'S APPROVAL OF THIS ALP REPRESENTS ACCEPTANCE OF THE GENERAL LOCATION OF FUTURE FACILITIES DEPICTED. DURING THE PRELIMINARY DESIGN PHASE, THE AIRPORT OWNER IS REQUIRED TO SUBMIT FOR APPROVAL THE FINAL LOCATIONS, HEIGHT, AND EXTERIOR FINISHES OF STRUCTURES. THE FAA'S CONCERN IS OBSTRUCTIONS, IMPACT TO ELECTRONIC AIDS OR ADVERSE EFFECTS ON CONTROLLER VIEW OF AIRCRAFT APPROACH, AND GROUND MOVEMENT AREAS WHICH COULD ADVERSELY AFFECT THE SAFETY, EFFICIENCY, OR UTILITY OF THE AIRPORT.

RUNWAY DATA TABLE								
RUNWAY DATA	Runway 15/33		Runway 14/32		Runway 1/19		Runway 18/36	
	Existing		Ultimate		Existing		Ultimate	
	Runway 15	Runway 33	Runway 14	Runway 32	Runway 1	Runway 19	Runway 36	Runway 18
Runway Design Code (RDC)	C-IV		Same		B-I (small)		B-I (small)	
Runway Approach Reference Code (APRC)	D/VI/2400	D/VI/4000	Same	Same	B/III/5000 D/II/5000	B/III/VIS D/II/VIS	A/B I(S)/5000	A/B I(S)/5000
Runway Departure Reference Code (DPRC)	D/VI	D/VI	Same	Same	B/III D/II	B/III D/II	B/I (S)	B/I (S)
True Bearing	S130° 48' 57.8"E/N310° 49'58.6"W		Same		S171° 25' 8.0"E/N351° 25'13.9"W		Same	
Critical Aircraft	BOEING 757		BOEING 757		CESSNA 172		CESSNA 172	
Pavement Strength & Material Type								
Strength by Wheel Loading (SW, DW, DTW) lbs	100,000/175,000/355,000		Same		30,000/40,000/60,000		Same	
Strength by PCN	PCN 39 F/A/X/T		Same		PCN 23/F/A/X/T		Same	
Surface Type	Concrete		Same		Asphalt		Same	
Surface Treatment	Grooved-Asphalt		Same		None		Same	
Effective Runway Gradient (%)	0.3%		Same		0.2%		0.1%	
Wind Coverage (%) (20kts)	59.6%	59.7%	Same	Same	57.1%	59.4%	Same	Same
Runway Dimensions	8,319' X 150'		Same		4,112' X 75'		2,692' X 75'	
Displaced Threshold Coordinates (NAD 83)								
Latitude	N/A	44° 27' 59.96" N	Same	Same	44° 27' 51.97" N	44° 28' 25.04" N	44° 27' 51.97" N	N/A
Longitude	N/A	73° 08' 35.56" W	Same	Same	73° 09' 04.07" W	73° 09' 11.04" W	73° 09' 04.07" W	N/A
Elevation	N/A	334.2 MSL	Same	Same	333.0 MSL	329.40 MSL	333.0 MSL	N/A
Runway End Coordinates (NAD 83)								
Latitude	44° 28' 50.43" N	44° 27' 56.73" N	Same	Same	44° 27' 49.77" N	44° 28' 29.92" N	44° 27' 49.77" N	44° 28' 16.06" N
Longitude	73° 09' 57.16" W	73° 08' 30.35" W	Same	Same	73° 09' 03.61" W	73° 09' 12.07" W	73° 09' 03.61" W	73° 09' 09.13" W
Runway End Elevation	305.5' MSL	334.6 MSL	Same	Same	333.7 MSL	326.8 MSL	333.7 MSL	332.0 MSL
Runway Lighting Type	HIRL		Same		MIRL		Same	
Runway Shoulder Width	25'		25'		20'		20'	
Runway Protection Zone (RPZ)	See separate table		See separate table		See separate table		See separate table	
Runway Marking Type	PRECISION		Same		NPI		NPI Visual	
14 CFR Part 77 Approach Category	50:1	50:1	Same	Same	34:1	20:1	Same	Same
Visibility Minimums	≥ 1/2 STATUTE MILE	≥ 3/4 STATUTE MILE	Same	Same	≥ 1 STATUTE MILE	VISUAL	Same	Same
Type of Aeronautical Survey Required	VG	VG	Same	Same	VG	NVG	Same	Same
Runway Departure Surface Required	Yes (40:1)	Yes (40:1)	Same	Same	Yes (40:1)	No	Same	Same
Runway Object Free Area (ROFA)								
Width	800'	800'	Same	Same	250'	250'	250'	250'
Length Prior to Threshold	600'	600'	Same	Same	240'	240'	240'	240'
Length beyond Runway End	1,000'	860'	Same	Same	240'	240'	240'	240'
Runway Safety Area (RSA)								
Width	500'	410'	Same	Same	120'	120'	120'	120'
Length prior to Threshold	600'	600'	Same	Same	240'	240'	240'	240'
Length beyond Runway End	1,000'	860'	Same	Same	240'	240'	240'	240'
Obstacle Free Zone (OFZ) (Width x Length Beyond End)	400' x 8,719'		Same		250' x 4,512'		250' x 3,092'	
Precision Obstacle Free Zone (POFZ)	200' X 800'		Same		N/A		N/A N/A	
Threshold Siting Surface (TSS)	34:1	20:1	Same	Same	20:1	20:1	Same	Same
Penetrations to TSS	Yes	No	Same	Same	Yes	No	Yes	No
Visual and Instrument NAVAIDS	PAPI 4R, MALSR	PAPI 4R, MALSF	Same	Same	PAPI 4R, REILS	PAPI 4R, REILS	PAPI 2L	PAPI 4R
Touchdown Zone Elevation (TDZE)	325.9	334.2	Same	Same	333.6	333.6	333.6	333.7
Taxiways	See separate table		See separate table		See separate table		See separate table	
Horizontal/Vertical Datum	NAD 83/NAVD 88							

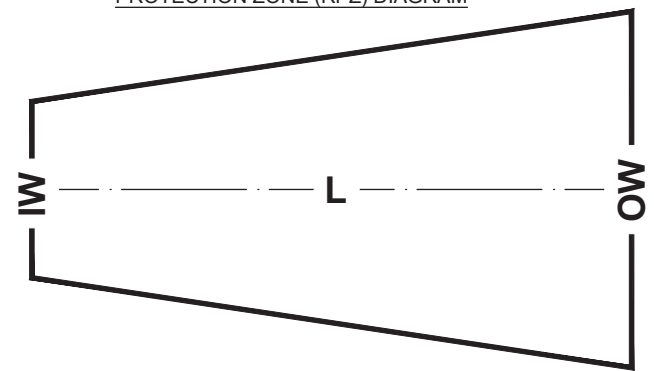
MODIFICATION OF DESIGN STANDARDS					
NO.	STANDARD MODIFIED	FAA REGULATION	EXISTING CONDITIONS	PROPOSED ACTION	DATE OF FAA APPROVAL
	Twy A Non-movement marking on terminal apron separation	TDG3 requires 93'	76.5'	painted non-movement marking	5/20/2011
	Twy C CL to non-movement area	TDGIV requires 112.5'	Used 0.6 x WS + 10'	painted non-movement marking	

Taxiway Data Table													
Taxiway Name	A	B	C	D	E	F	G	H	J	K	L	M	N
Taxiway Width	50'	50'	50'	50'	50'	50'	75'/50'	75'	75'	75'	75'	75'	75'
Taxiway Safety Area	118'	171'	-	-	-	-	-	-	-	171'	-	-	-
Taxiway Object Free Area	186'	259'	-	-	-	-	-	-	-	259'	-	-	-
Taxiway Lighting	MITL												
Taxiway to Fixed/Movable Object	85'	-	126'	-	-	-	280'	-	-	325'	-	-	-
Taxiway Shoulder Width (existing)	25' partial	25'	25'	-	-	-	25'	25'	25'	25'	20' partial	25'	-
TDG	5/3	5	5	-	-	-	5/4	5	5	5	5	5	-

AIRPORT DATA TABLE		
AIRPORT DATA	EXISTING	ULTIMATE
Airport Elevation (MSL)	334.6' MSL	334.6' MSL
Airport Reference Point (ARP NAD 83)		
Latitude	44° 28' 19.04" N	44° 28' 18.53" N
Longitude	73° 09' 11.79" W	73° 09' 11.95" W
Mean Max Temperature of Hottest Month	81.0° F (July)	Same
Airport Terminal Area NAVAIDS	BEACON, ILS, ASR-11, ATCT, GPS, WINDCONE (LIGHTED)	Same
Airport Reference Code (ARC)	C-IV	Same
Critical Aircraft	BOEING 757	BOEING 757
Taxiway Design Group	4 (Airfield)/ 3(Terminal)	Same
Misc. Facilities	ASOS	Same
Magnetic Variation	14° 1' W changing by 0° 5' E per year	12° 30' W changing by 0° 5' E per year
Date of Magnetic Declination	September 4, 2020	2040
NPIAS Service Level	SMALL HUB	Same
State Service Level	NATIONAL SERVICE	Same
FAA Airport Identifier		BTW

DECLARED DISTANCE TABLE								
Runway	EXISTING				ULTIMATE			
	TORA	TODA	ASDA	LDA	TORA	TODA	ASDA	LDA
15	7,820'	7,820'	7,820'	7,820'	Same	Same	Same	Same
33	8,320'	8,320'	8,320'	7,820'	Same	Same	Same	Same
1	3,611'	3,611'	3,611'	3,386'	2,692'	2,692'	2,692'	2,467'
19	4,111'	4,111'	4,111'	3,386'	2,692'	2,692'	2,692'	2,692'

RUNWAY PROTECTION ZONE (RPZ) DIAGRAM

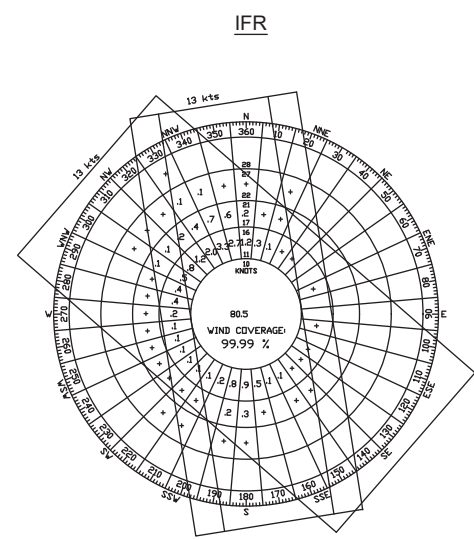
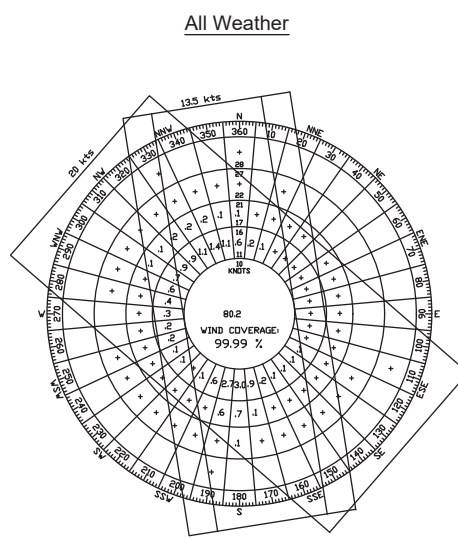


Existing Approach Runway Protection Zone (RPZ) Table				
	Runway 15	Runway 33	Runway 1	Runway 19
Inner Width (IW)	1,000'	500'	250'	250'
Outer Width (OW)	1,750'	1,010'	450'	450'
Length (L)	2,500'	1,700'	1,000'	1,000'

Proposed Approach Runway Protection Zone (RPZ) Table				
	Runway 14	Runway 32	Runway 36	Runway 18
Inner Width (IW)	1,000'	500'	250'	250'
Outer Width (OW)	1,750'	1,010'	450'	450'
Length (L)	2500'	1700'	1,000'	1,000'

Existing Departure Runway Protection Zone (RPZ) Table				
	Runway 15	Runway 33	Runway 1	Runway 19
Inner Width (IW)	500'	500'	250'	250'
Outer Width (OW)	1,010'	1,010'	450'	450'
Length (L)	1,700'	1,700'	1,000'	1,000'

Proposed Departure Runway Protection Zone (RPZ) Table				
	Runway 14	Runway 32	Runway 36	Runway 18
Inner Width (IW)	500'	500'	250'	250'
Outer Width (OW)	1,010'	1,010'	450'	450'
Length (L)	1,700'	1,700'	1,000'	1,000'



All Weather				
Runway	10.5 kt	13 kt	16 kt	20 kt
Runway 15-33	92.88%	97.11%	99.36%	99.60%
Runway 1-19	97.19%	98.73%	99.80%	99.96%
All Runways	99.40%	99.78%	99.96%	100.00%

IFR Weather (Ceiling between 250 feet and 1000 feet; Visibility between 3/4 and 3 Statute Miles)				
Runway	10.5 kt	13 kt	16 kt	20 kt
Runway 15-33	95.71%	98.41%	99.67%	99.96%
Runway 1-19	97.76%	98.96%	99.78%	99.97%
All Runways	99.52%	99.81%	99.96%	100.00%

NOTES

- WIND DATA OBTAINED FROM FAA ADIP WEBSITE, SOURCED FROM (NCDC) IN ASHEVILLE, NORTH CAROLINA. THE WIND DATA WAS COLLECTED FOR A 10-YEAR PERIOD FROM 2008 THROUGH 2017 AT BURLINGTON INTERNATIONAL AIRPORT.
- PROPOSED ARP CALCULATED USING NGS ARP COMPUTATIONS WEBSITE
- PROPOSED RUNWAY DISTANCE CALCULATED USING FAA DISTANCE CALCULATION TOOL.
- MAGNETIC DECLINATION OBTAINED FROM NOAA WEBSITE, SEPT 2020.

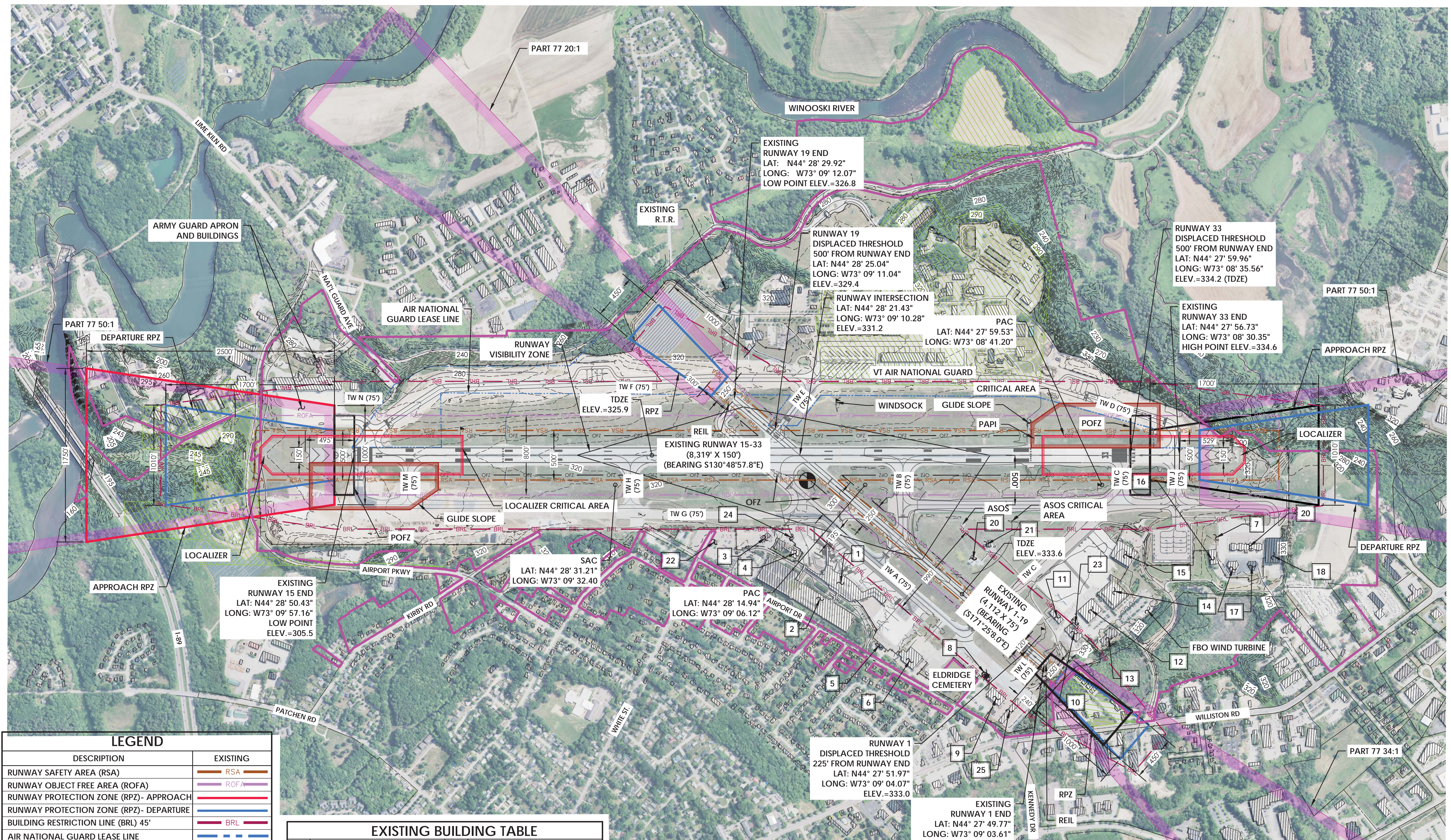


Stamp:

Client:
BURLINGTON INTERNATIONAL AIRPORT
1200 Airport Drive
South Burlington, VT 05403

Passero Associates
242 W. Main Street
Rochester, NY 14614
(585) 325-1000
Fax: (585) 325-1691
Principal-in-Charge Andrew Holesko
Project Manager Lisa Chueng
Designed by Wayne Zian

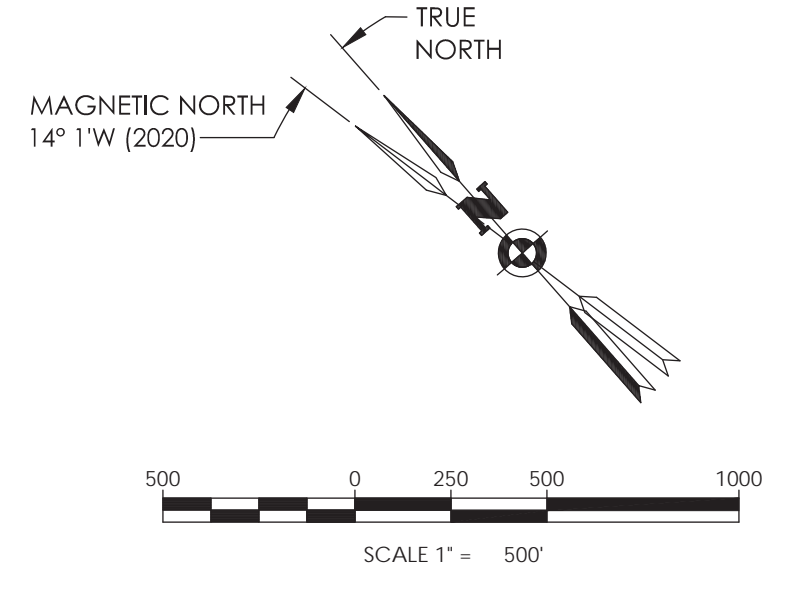
Revisions			
No.	Date	By	Description



LEGEND	
DESCRIPTION	EXISTING
RUNWAY SAFETY AREA (RSA)	RSA
RUNWAY OBJECT FREE AREA (ROFA)	ROFA
RUNWAY PROTECTION ZONE (RPZ)- APPROACH	RPZ
RUNWAY PROTECTION ZONE (RPZ)- DEPARTURE	RPZ
BUILDING RESTRICTION LINE (BRL) 45'	BRL
AIR NATIONAL GUARD LEASE LINE	ANGL
AIRPORT REFERENCE POINT	ARP
EXISTING BUILDINGS	BLDG
AIRPORT PROPERTY LINE	APL
EXISTING FENCE, 8' HEIGHT	FENCE
EXISTING PAVEMENT	PAV
WETLANDS	WET
GROUND ELEVATION CONTOURS	CONTOUR
ILS/APPROACH LIGHT CRITICAL AREAS	ILS
EASEMENT/ RIGHT OF WAY	EASEMENT
PAPI	PAPI
AIRPORT BEACON	BEACON
AUTOMATED SURFACE OBSERVING SYSTEM	ASOS
THRESHOLD LIGHTS	THRESHOLD
WINDSOCK	WINDSOCK

EXISTING BUILDING TABLE			
NO.	DESCRIPTION/USE	NO.	DESCRIPTION/USE
1	TERMINAL BUILDING	17	HEXAGON HANGARS
2	COVERED PARKING GARAGE	18	CONT. MAINT. HANGAR
3	CAR WASH	19	ALERT HANGARS
4	FAA BUILDING & ATCT	20	NEW ASR-11 TOWER (2005)
5	BUILDING 6	21	PREVIOUS ASR-9 TOWER SITE
6	NORTH HANGAR	22	PARKING CONTROL OFFICE
7	FUEL FARM	23	SAND/SNOW EQUIPMENT
8	BEACON SOUTH BUILDING	24	AIRFIELD LIGHTING VAULT
9	HANGAR	25	T-HANGAR
10	HANGAR /MAINTENANCE SHOP		
11	HANGAR (FEDEX)		
12	HANGAR (ASH)		
13	HANGER (AVIATRON)		
14	HERITAGE AVIATION HANGAR		
15	PRATT & WHITNEY		
16	HANGAR (VFA)		

NOTE:
 DURING THIS MASTER PLAN TAXIWAY G WAS UNDER CONSTRUCTION, RELOCATING CLOSER TO RUNWAY 15-33 AT 500 FEET IN LINE WITH TAXIWAY K

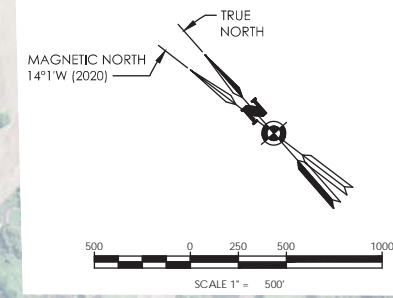
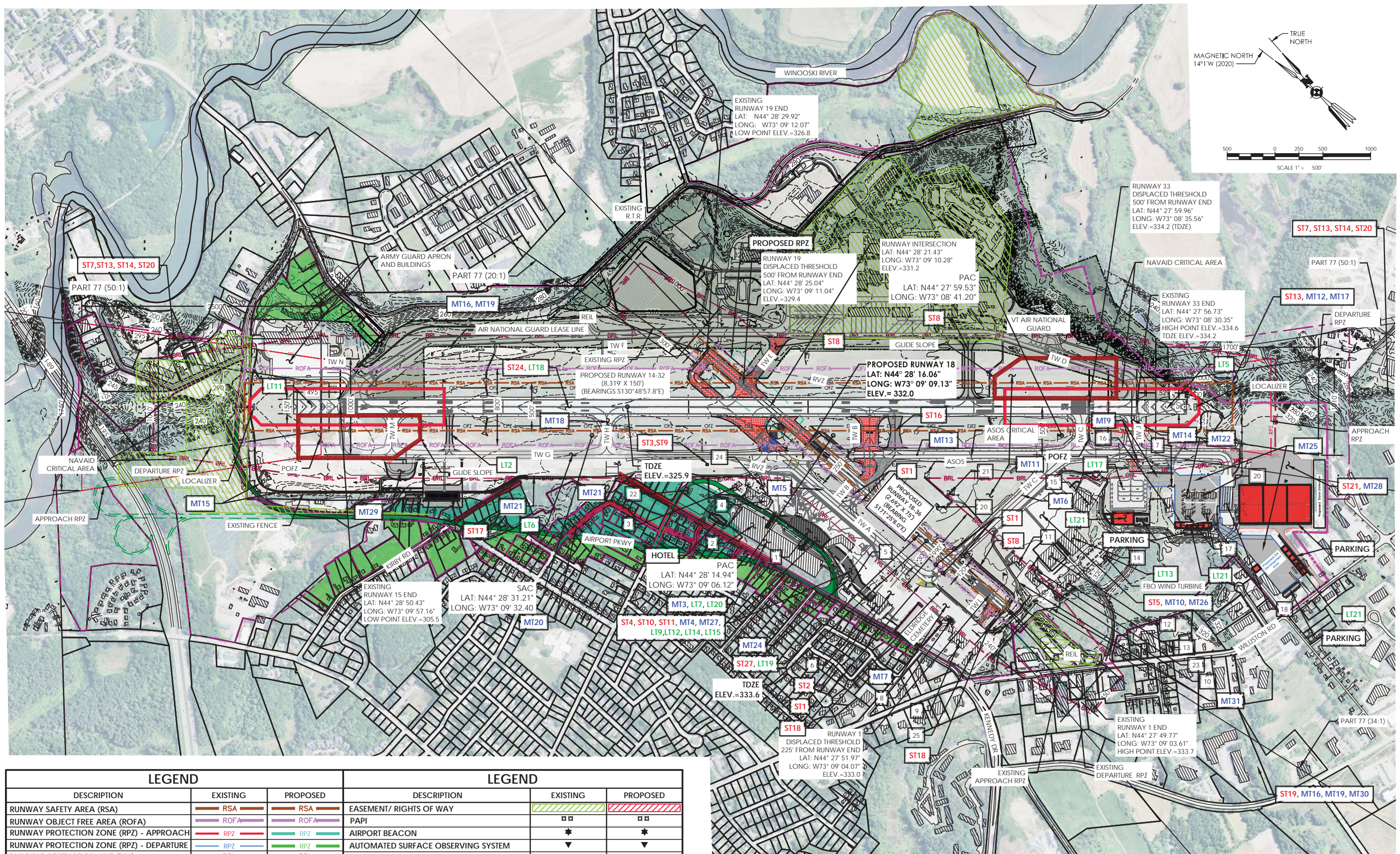


Client:
BURLINGTON INTERNATIONAL AIRPORT
 1200 Airport Drive
 South Burlington, VT 05403

Passero Associates
 242 W. Main Street
 Rochester, NY 14614
 (585) 325-1000
 Fax: (585) 325-1691
 Principal-in-Charge: Andrew Holesko
 Project Manager: Lisa Chueng
 Designed by: Wayne Zian

Revisions			
No.	Date	By	Description

Existing Facilities
 Airport Layout Plan Update
Burlington International Airport (BTV)
 Town/City: South Burlington
 County: CHITTENDEN State: Vermont
 Project No. 20150403.0002
 Drawing No. 3
 Date January 2021



LEGEND	
DESCRIPTION	EXISTING / PROPOSED
RUNWAY SAFETY AREA (RSA)	EXISTING: [Red line] PROPOSED: [Red line]
RUNWAY OBJECT FREE AREA (ROFA)	EXISTING: [Purple line] PROPOSED: [Purple line]
RUNWAY PROTECTION ZONE (RPZ) - APPROACH	EXISTING: [Blue line] PROPOSED: [Blue line]
RUNWAY PROTECTION ZONE (RPZ) - DEPARTURE	EXISTING: [Green line] PROPOSED: [Green line]
BUILDING RESTRICTION LINE (BRL)	EXISTING: [Red line] PROPOSED: [Red line]
AIR NATIONAL GUARD LEASE LINE	EXISTING: [Blue dashed line] PROPOSED: [Blue dashed line]
AIRPORT REFERENCE POINT	EXISTING: [Black circle] PROPOSED: [Blue circle]
EXISTING BUILDINGS	EXISTING: [Hatched] PROPOSED: [Red]
AIRPORT PROPERTY LINE	EXISTING: [Purple dashed] PROPOSED: [Green dashed]
EXISTING FENCE (8' HEIGHT)	EXISTING: [X-X] PROPOSED: [X-X]
EXISTING PAVEMENT	EXISTING: [Grey] PROPOSED: [Red]
REMOVE PAVEMENT	EXISTING: [N/A] PROPOSED: [Red]
GROUND ELEVATION CONTOURS	EXISTING: [Dashed] PROPOSED: [Dashed]
ILS/APPROACH LIGHT CRITICAL AREAS	EXISTING: [Yellow] PROPOSED: [Yellow]

LEGEND	
DESCRIPTION	EXISTING / PROPOSED
EASEMENT/ RIGHTS OF WAY	EXISTING: [Green hatched] PROPOSED: [Red hatched]
PAPI	EXISTING: [Black square] PROPOSED: [Black square]
AIRPORT BEACON	EXISTING: [Black star] PROPOSED: [Black star]
AUTOMATED SURFACE OBSERVING SYSTEM	EXISTING: [Black triangle] PROPOSED: [Black triangle]
THRESHOLD LIGHTS	EXISTING: [Black dots] PROPOSED: [Black dots]
WINDSOCK	EXISTING: [Black triangle] PROPOSED: [Black triangle]
PROPOSED ROADWAYS	EXISTING: [N/A] PROPOSED: [Green]
ACQUIRE AND CONVERT TO AIRPORT DEVELOPMENT LAND	EXISTING: [N/A] PROPOSED: [Red]
RETAIN AND CONVERT TO AIRPORT DEVELOPMENT LAND	EXISTING: [N/A] PROPOSED: [Green]
RETAIN AND CONVERT TO AIRPORT NOISE BUFFER	EXISTING: [N/A] PROPOSED: [Green]
PAVEMENT	EXISTING: [Grey] PROPOSED: [Grey]

- NOTE:**
- PROPOSED I-89 CONNECTION SHOWN FOR PLANNING USE BY OTHERS IN REGIONAL STUDIES.
 - ANY MISSING NUMBERS IN PROJECT TABLES, ARE EITHER EQUIPMENT PURCHASES OR STUDIES.

THE FAA'S APPROVAL OF THIS ALP REPRESENTS ACCEPTANCE OF THE GENERAL LOCATION OF FUTURE FACILITIES DEPICTED. DURING THE PRELIMINARY DESIGN PHASE, THE AIRPORT OWNER IS REQUIRED TO SUBMIT FOR APPROVAL THE FINAL LOCATIONS, HEIGHT, AND EXTERIOR FINISHES OF STRUCTURES. THE FAA'S CONCERN IS OBSTRUCTIONS, IMPACT TO ELECTRONIC AIDS OR ADVERSE EFFECTS ON CONTROLLER VIEW OF AIRCRAFT APPROACH, AND GROUND MOVEMENT AREAS WHICH COULD ADVERSELY AFFECT THE SAFETY, EFFICIENCY, OR UTILITY OF THE AIRPORT.

Stamp:
Client:
BURLINGTON INTERNATIONAL AIRPORT
1200 Airport Drive
South Burlington, VT 05403

Passero Associates
242 W. Main Street
Rochester, NY 14614
(585) 325-1000
Fax: (585) 325-1691
Principal-in-Charge: Andrew Holesko
Project Manager: Lisa Chueng
Designed by: Wayne Zian

Revisions			
No.	Date	By	Description

Proposed ALP
Airport Layout Plan Update
Burlington International Airport (BTV)
Town/City: South Burlington
County: CHITTENDEN State: Vermont
Project No.
20150403.0002
Drawing No.
4
Date
January 2021

SHORT TERM PROJECT	
NO.	PROJECT
ST1	T/W C (RELOCATED HOLDLINES/SIGNS, INSTALL GUARD LIGHTS, PAINTED INSTALL ON T/W A, CONSTRUCT T/W EAST SIDE T/W C TO R/W 1), T/W B (RELOCATE HOLDLINES/SIGNS, INSTALL NEW SIGN/GUARD LIGHTS)
ST2	SOUTH APRON EXPANSION (TO CEMETERY), (PHASE 2)
ST3/9	NEW GLYCOL TREATMENT SYSTEM
ST4	TERMINAL EXPANSION TO SOUTH (TIP)
ST5/12	REHABILITATE CUSTOMS/ CARGO APRON
ST7	AVIGATION EASEMENT/ACQUISITION (OBSTRUCTION AREAS)
ST8	RELOCATE T/W E, REMEDIATE HOT SPOT
ST10	TERMINAL EXPANSION SOUTH
ST11	IN LINE BAGGAGE MAKEUP
ST13	AVIGATION EASEMENT/ACQUISITION (OBSTRUCTION AREAS) R/W 15,33
ST14	OBSTRUCTION REMOVAL (R/W 15,33)
ST16	RELOCATE T/W B
ST17	NEW/EXPAND SRE FACILITY
ST18	EXPAND APRON FROM T/W C TO T/W 1, RELOCATE T/W L
ST19	AVIGATION EASEMENT/ACQUISITION R/W 1
ST20	OBSTRUCTION REMOVAL (R/W 15,33)
ST21	AVIATION RELATED DEVELOPMENT
ST24	R/W 15-33 MILL AND OVERLAY
ST27	R/W 1-19 MILL AND OVERLAY

MID TERM PROJECT	
NO.	PROJECT
MT3	PARKING GARAGE
MT4	TERMINAL EXPANSION (INSTALL, EXPAND MAIN CENTRAL TERMINAL (3 GATE BRIDGES/HOLDROOMS)
MT5	T/W A REHABILITATION (T/W G TO T/W C)
MT6	T/W C REHABILITATION
MT7	SOUTH APRON REHABILITATION
MT9	RELOCATE T/W CONNECTOR R/W 33, EXPAND APRON PAVEMENT TO VALLEY APRON
MT10	890 APRON REHABILITATION
MT11	DEICING UPGRADES, PHASE 2 (890/VALLEY WEST INFELD UPGRADES)
MT12	LAND ACQUISITION (R/W 33)
MT13	T/W K ("G" EAST) REHABILITATION
MT14	T/W J REHABILITATION
MT15	PERIMETER ROAD REHABILITATION & FENCE REPLACEMENT (SECT 05)
MT16	EASEMENT ACQUISITION (R/W 1,19)
MT17	R/W 33 SAFETY AREA IMPROVEMENT
MT18	T/W H REHABILITATION
MT19/30	OBSTRUCTION REMOVAL (R/W 1,19)
MT20	ROADWAY CLOSURES INTO AIRPORT PROPERTY
MT21	PERIMETER ROAD REHABILITATION & FENCE REPLACEMENT (SECT 10,20)
MT22	REMOVE READY HANGAR, OCTAGON HANGARS
MT24	CURBSIDE IMPROVEMENTS
MT25	REHABILITATE GA APRON
MT26	890 APRON REHABILITATION
MT27	TERMINAL EXPANSION (SOUTH GATE AREA)
MT28	AVIATION RELATED DEVELOPMENT
MT29	DEICING UPGRADE, PHASE 3 (PAD - R/W 15) WITH BLAST FENCE
MT31	PERIMETER ROAD REHABILITATION & FENCE REPLACEMENTS (SECT 30,40)

LONG TERM PROJECT	
NO.	PROJECT
LT2	RELOCATE T/W M
LT4	TERMINAL EXPANSION (SOUTH, WITH 2 JET BRIDGES)
LT5/11	REHABILITATE OVERRUN
LT6	T/W G (WEST) MILL & OVERLAY
LT7/20	PARKING GARAGE IMPROVEMENTS
LT9	REMOVE EXISTING SOUTH CONCOURSE (INSTALL 3 NEW JET BRIDGES)
LT12	TERMINAL EXPANSION TO THE NORTH
LT13	FUEL FARM UPGRADES
LT14	REMOVE EXISTING NORTH TERMINAL, CONSTRUCT 3 JET BRIDGES
LT15	EXPAND BAGGAGE CLAIM
LT17	REHABILITATE VALLEY WEST APRON
LT18	R/W 15-33 MILL AND OVERLAY
LT19	R/W 1-19 MILL AND OVERLAY (SHORTEN RUNWAY)
LT20	CONSTRUCT HANGARS (VALLEY APRON)
LT21	CONSTRUCT HANGARS (EAST VALLEY)

EXISTING BUILDING TABLE			
NO.	DESCRIPTION/USE	NO.	DESCRIPTION/USE
1	TERMINAL BUILDING	14	HERITAGE AVIATION HANGAR
2	COVERED PARKING GARAGE	15	PRATT & WHITNEY
3	CAR WASH	16	HANGAR (VFA)
4	FAA BUILDING & ATCT	17	HEXAGON HANGARS
5	HANGAR 6	18	CONT. MAINT. HANGAR
6	NORTH HANGAR	19	ALERT HANGARS
7	FUEL FARM	20	NEW ASR-11 TOWER (2005)
8	BEACON SOUTH BUILDING	21	PREVIOUS ASR-9 TOWER SITE
9	HANGAR	22	PARKING CONTROL OFFICE
10	HANGAR /MAINTENANCE SHOP	23	SAND/SNOW EQUIPMENT
11	HANGAR (FEDEX)	24	AIRFIELD LIGHTING VAULT
12	HANGAR (ASH)	25	HANGAR
13	HANGER (AVIATRON)		



PASSERO ASSOCIATES

Engineering Architecture
www.passero.com



Stamp:

Client:
BURLINGTON INTERNATIONAL AIRPORT
1200 Airport Drive
South Burlington, VT 05403

Passero Associates
242 W. Main Street (585) 325-1000
Rochester, NY 14614 Fax: (585) 325-1691
Principal-in-Charge Andrew Holesko
Project Manager Lisa Chueng
Designed by Wayne Zian

Revisions			
No.	Date	By	Description

UNAUTHORIZED ALTERATIONS OR ADDITIONS TO THIS DRAWING IS IN VIOLATION OF STATE EDUCATION LAW ARTICLE 145 SECTION 7209 AND ARTICLE 147 SECTION 7307. THESE PLANS ARE COPYRIGHT PROTECTED ©

Proposed ALP
Airport Layout Plan Update
Burlington International Airport (BTV)
Town/City: South Burlington
County: CHITTENDEN State: Vermont
Project No. 20150403.0002
Drawing No. 4A
Date January 2021