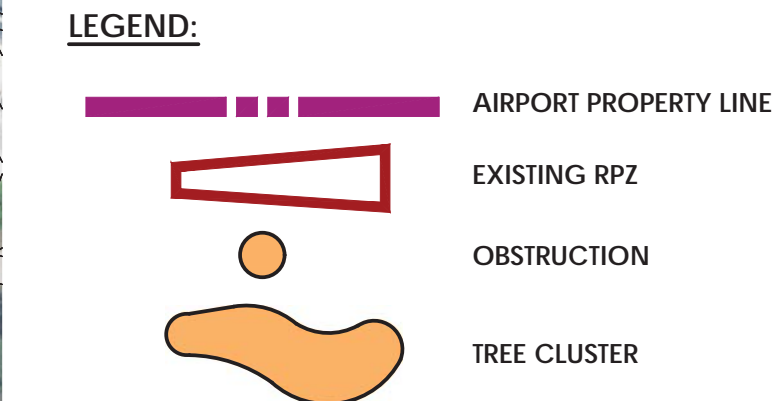
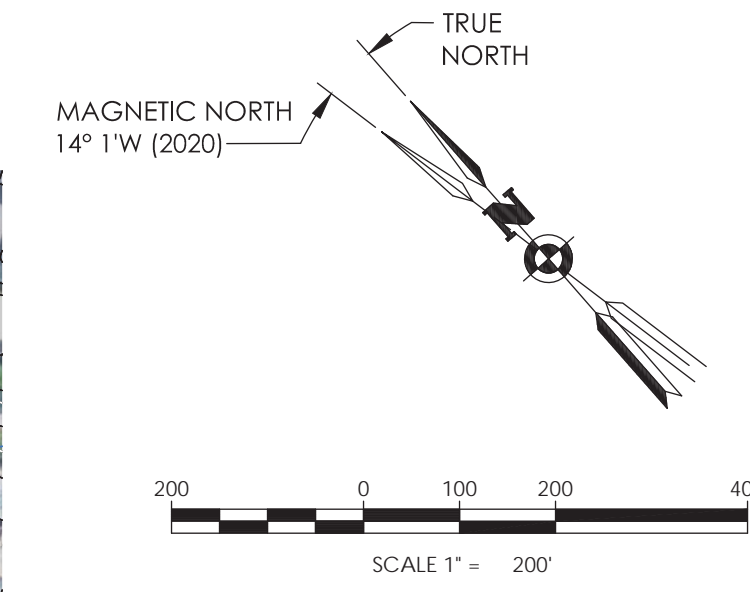
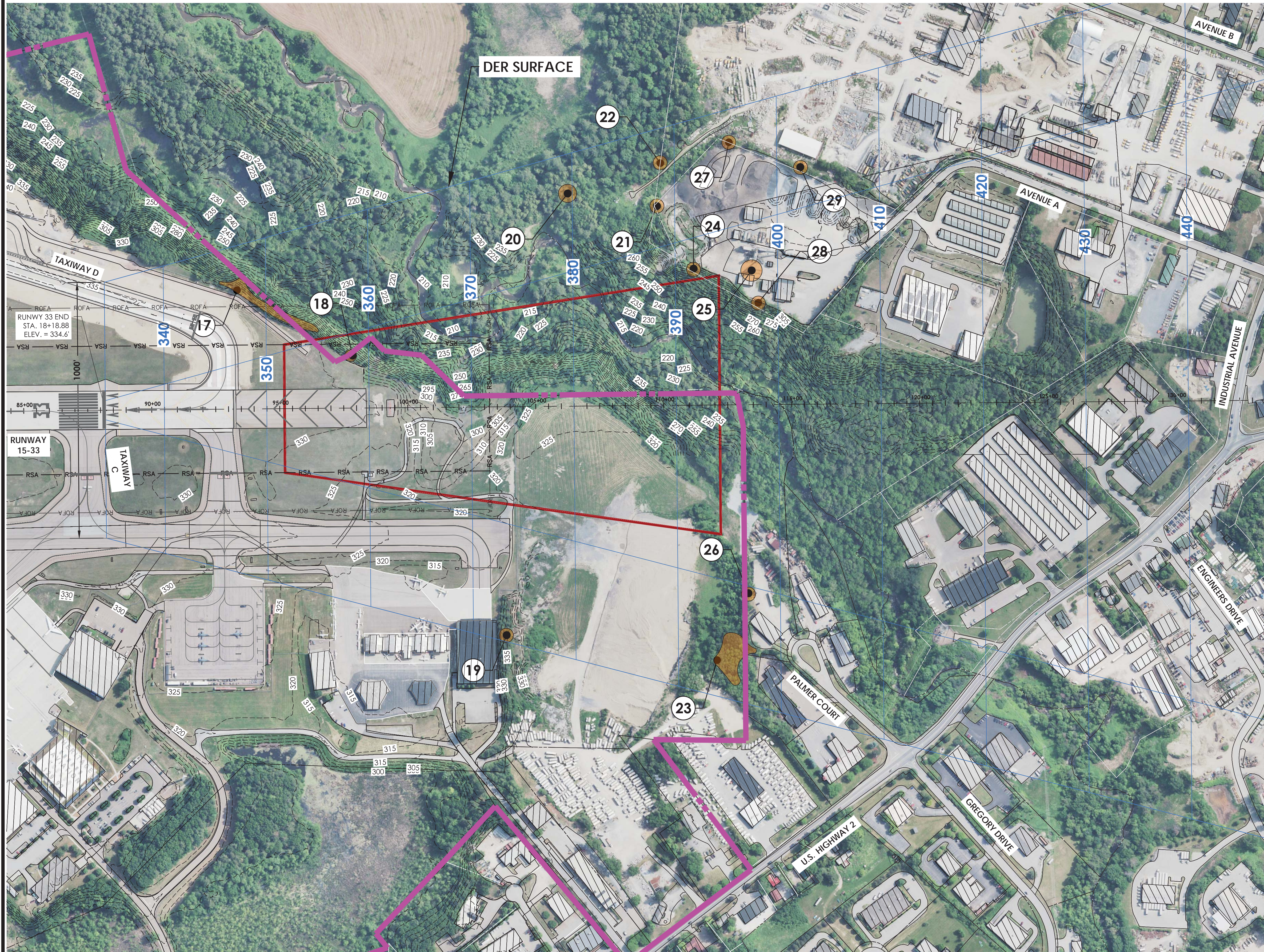


DER SURFACE

TYPE 7	FROM DISPLACED THRESHOLD	INNER WIDTH	OUTER WIDTH	DISTANCE	SLOPE
DER	0'	1000'	6,466'	10,200'	40:1



Stamp:  
 \_\_\_\_\_  
 \_\_\_\_\_

Client:  
**BURLINGTON INTERNATIONAL AIRPORT**  
 1200 Airport Drive  
 South Burlington, VT 05403

**Passero Associates**  
 242 W. Main Street (585) 325-1000  
 Rochester, NY 14614 Fax: (585) 325-1691  
 Principal-in-Charge Andrew Holesko  
 Project Manager Lisa Chueng  
 Designed by Wayne Zian

Revisions			
No.	Date	By	Description

UNAUTHORIZED ALTERATIONS OR ADDITIONS TO THIS DRAWING IS IN VIOLATION OF STATE EDUCATION LAW ARTICLE 145 SECTION 7309 AND ARTICLE 147 SECTION 7307. THESE PLANS ARE COPYRIGHT PROTECTED ©

**DER For Runway 15**  
 Airport Layout Plan Update  
**Burlington International Airport (BTV)**  
 Town/City: South Burlington  
 County: CHITTENDEN State: Vermont  
 Project No. 20150403.0002  
 Drawing No. 12A  
 Date January 2021

- NOTES:
- OBSTACLE DATA SOURCE, WOOLPERT SURVEY, 2019.
  - "ALL OBJECT ELEVATIONS ARE CURRENT AS OF THIS ALP UPDATE AND ARE SUBJECT TO CHANGE."
  - DER SET BY DECLARED DISTANCES AND BASED ON EB99 AT THE TIME, TABLE 3-2, TYPE 7.
  - PENETRATIONS SHOWN MAY NOT BE PENETRATIONS TO REVISED SURFACE IN EB99A.



Stamp:

Client:  
**BURLINGTON INTERNATIONAL AIRPORT**  
1200 Airport Drive  
South Burlington, VT 05403

**Passero Associates**  
242 W. Main Street (585) 325-1000  
Rochester, NY 14614 Fax: (585) 325-1691  
Principal-in-Charge Andrew Holesko  
Project Manager Lisa Chueng  
Designed by Wayne Zian

Revisions			
No.	Date	By	Description

UNAUTHORIZED ALTERATIONS OR ADDITIONS TO THIS DRAWING IS IN VIOLATION OF STATE EDUCATION LAW ARTICLE 145 SECTION 7309 AND ARTICLE 141 SECTION 7307. THESE PLANS ARE COPYRIGHT PROTECTED ©

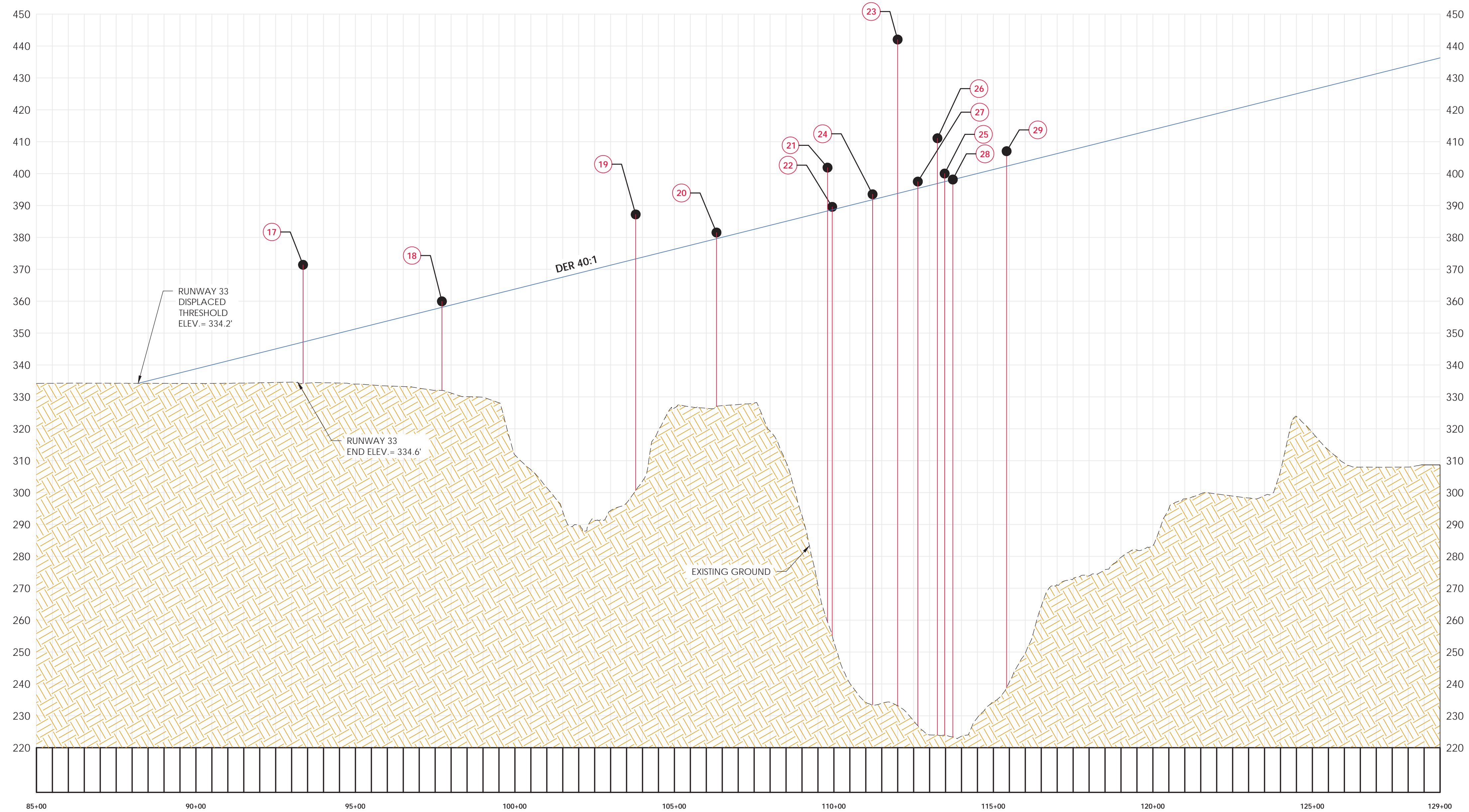
**DER For Runway 15**

Airport Layout Plan Update  
**Burlington International Airport (BTV)**  
Town/City: South Burlington  
County: CHITTENDEN State: Vermont

Project No.  
**20150403.0002**

Drawing No.  
**12B**

Date  
**January 2021**



**DER RUNWAY 33 PROFILE**

SCALE: HORIZONTAL - 1" = 200'  
VERTICAL - 1" = 10'

(DER) DEPARTURE END SITING SURFACE

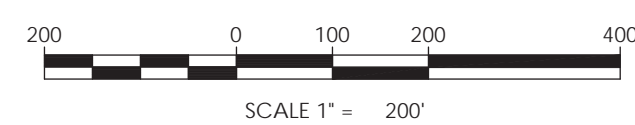
ID	DESCRIPTION	OBJECT ELEVATION	SURFACE HEIGHT ALLOWED	40:1 DER Penetration	ON/OFF AIRPORT	DISPOSITION
17	TREE GROUP	371.4	347.1	24.3	OFF	TRIM OR REMOVE
18	TREE GROUP	359.9	358.4	1.5	OFF	TRIM OR REMOVE
19	TREE	387.2	373.2	14.0	OFF	TRIM OR REMOVE
20	TREE	381.5	379.6	1.9	OFF	TRIM OR REMOVE
21	TREE	401.9	388.3	13.6	OFF	TRIM OR REMOVE
22	TREE	389.6	388.6	1.0	OFF	TRIM OR REMOVE
23	TREE GROUP	442.0	393.8	48.2	OFF	TRIM OR REMOVE
24	TREE GROUP	393.5	391.8	1.7	OFF	TRIM OR REMOVE
25	ELEVATOR	400.3	397.4	2.9	OFF	LIGHT OR MARK
26	TREE	411.1	385.3	25.8	OFF	TRIM OR REMOVE
27	TREE	397.5	395.4	2.1	OFF	TRIM OR REMOVE
28	TREE	398.1	398.0	0.1	OFF	TRIM OR REMOVE
29	TREE	407.0	402.3	4.7	OFF	TRIM OR REMOVE

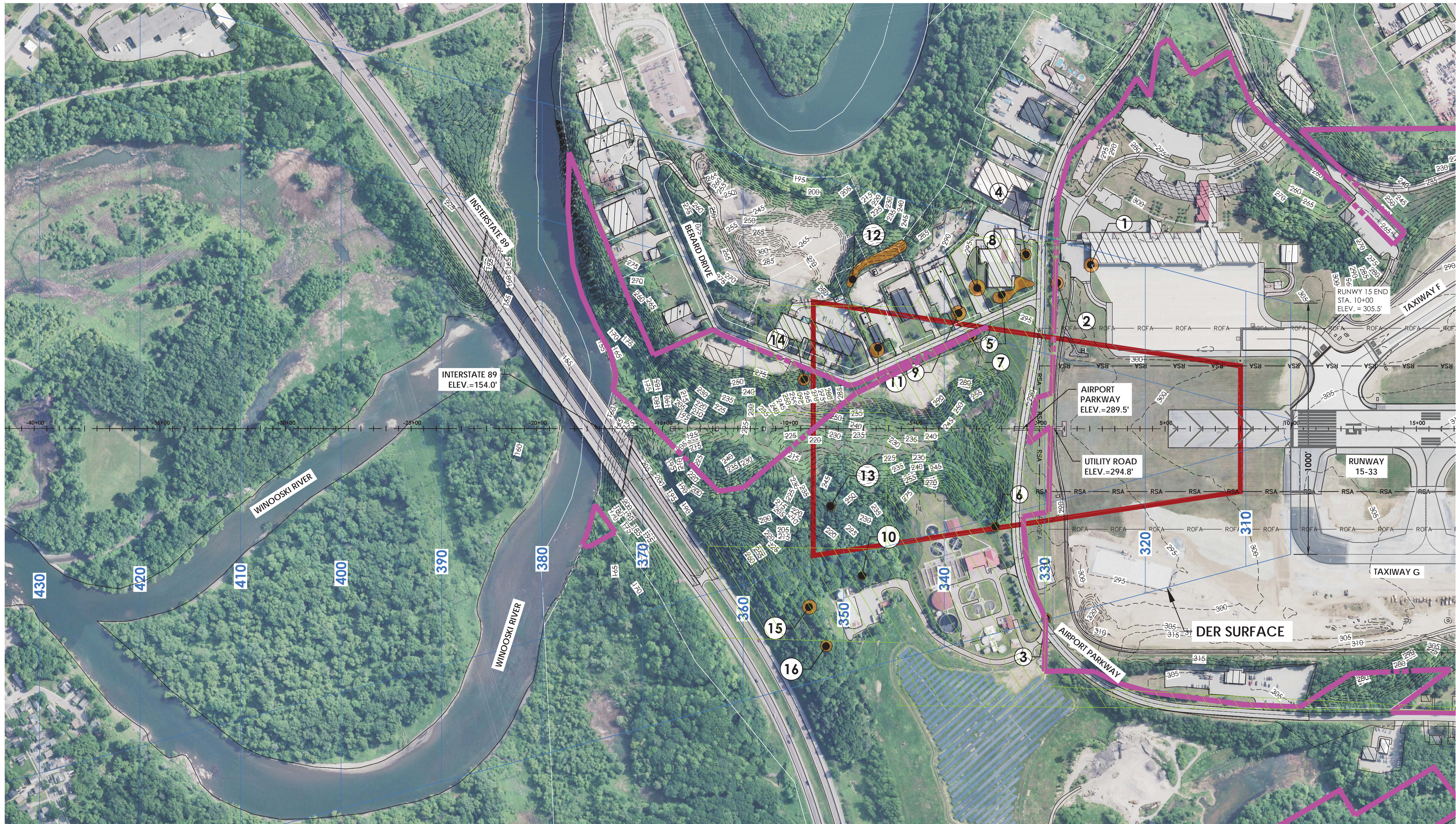
DER SURFACE

TYPE 7	FROM DISPLACED THRESHOLD	INNER WIDTH	OUTER WIDTH	DISTANCE	SLOPE
DER	0'	1000'	6,466'	10,200'	40:1

NOTES:

- OBSTACLE DATA SOURCE, WOOLPERT SURVEY, 2019.
- "ALL OBJECT ELEVATIONS ARE CURRENT AS OF THIS ALP UPDATE AND ARE SUBJECT TO CHANGE."
- DER SET BY DECLARED DISTANCES AND BASED ON EB99 AT THE TIME. SOME PENETRATIONS SHOWN MAY NOT PENETRATIONS TO THE REVISED SURFACE PER EB99A, TABLE 3-2, TYPE 7.





Stamp:  
 \_\_\_\_\_

Client:  
**BURLINGTON INTERNATIONAL AIRPORT**  
 1200 Airport Drive  
 South Burlington, VT 05403

**Passero Associates**  
 242 W. Main Street (585) 325-1000  
 Rochester, NY 14614 Fax: (585) 325-1691  
 Principal-in-Charge Andrew Holesko  
 Project Manager Lisa Chueng  
 Designed by Wayne Zian

Revisions			
No.	Date	By	Description

UNAUTHORIZED ALTERATIONS OR ADDITIONS TO THIS DRAWING IS IN VIOLATION OF STATE EDUCATION LAW ARTICLE 145 SECTION 7309 AND ARTICLE 147 SECTION 7307. THESE PLANS ARE COPYRIGHT PROTECTED ©






**DER For Runway 33**  
 Airport Layout Plan Update  
**Burlington International Airport (BTV)**  
 Town/City: South Burlington  
 County: CHITTENDEN State: Vermont  
 Project No. 20150403.0002  
 Drawing No. 13A  
 Date January 2021

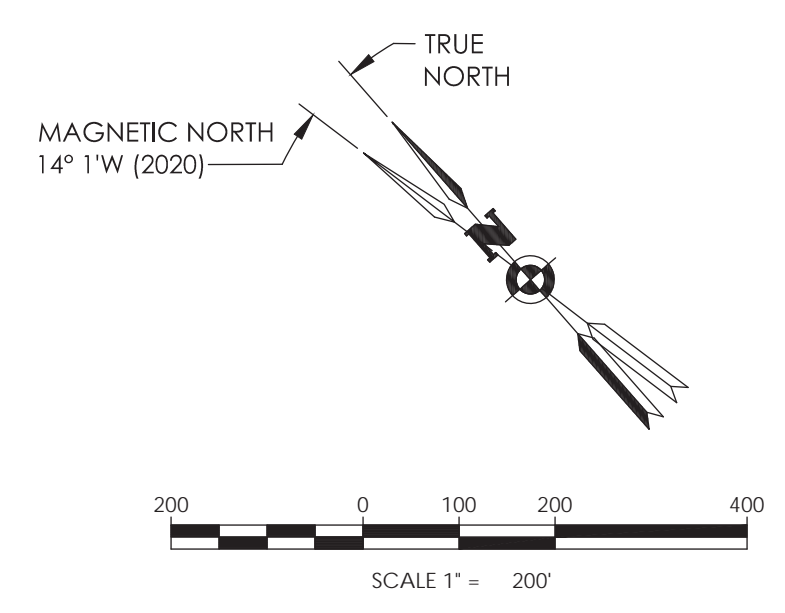
**DER SURFACE**

TYPE 7	FROM RUNWAY END	INNER WIDTH	OUTER WIDTH	DISTANCE	SLOPE
DER	0'	1000'	6,466'	10,200'	40:1

(DER) DEPARTURE END SITING SURFACE

**LEGEND:**

-  AIRPORT PROPERTY LINE
-  EXISTING RPZ
-  OBSTRUCTION
-  TREE CLUSTER
-  EXISTING EASEMENT



**NOTES:**

1. OBSTACLE DATA SOURCE, WOOLPERT SURVEY, 2019.
2. "ALL OBJECT ELEVATIONS ARE CURRENT AS OF THIS ALP UPDATE AND ARE SUBJECT TO CHANGE."
3. DER SET BY DECLARED DISTANCES AND BASED ON EB99A AT THE TIME, TABLE 3-2, TYPE 7.
4. PENETRATIONS SHOWN MAY NOT BE PENETRATIONS TO REVISED SURFACE IN EB99A.



Stamp:

Client:  
**BURLINGTON INTERNATIONAL AIRPORT**  
1200 Airport Drive  
South Burlington, VT 05403

**Passero Associates**  
242 W. Main Street (585) 325-1000  
Rochester, NY 14614 Fax: (585) 325-1691  
Principal-in-Charge Andrew Holesko  
Project Manager Lisa Chueng  
Designed by Wayne Zian

Revisions			
No.	Date	By	Description

UNAUTHORIZED ALTERATIONS OR ADDITIONS TO THIS DRAWING IS IN VIOLATION OF STATE EDUCATION LAW ARTICLE 145 SECTION 7309 AND ARTICLE 147 SECTION 7307. THESE PLANS ARE COPYRIGHT PROTECTED ©

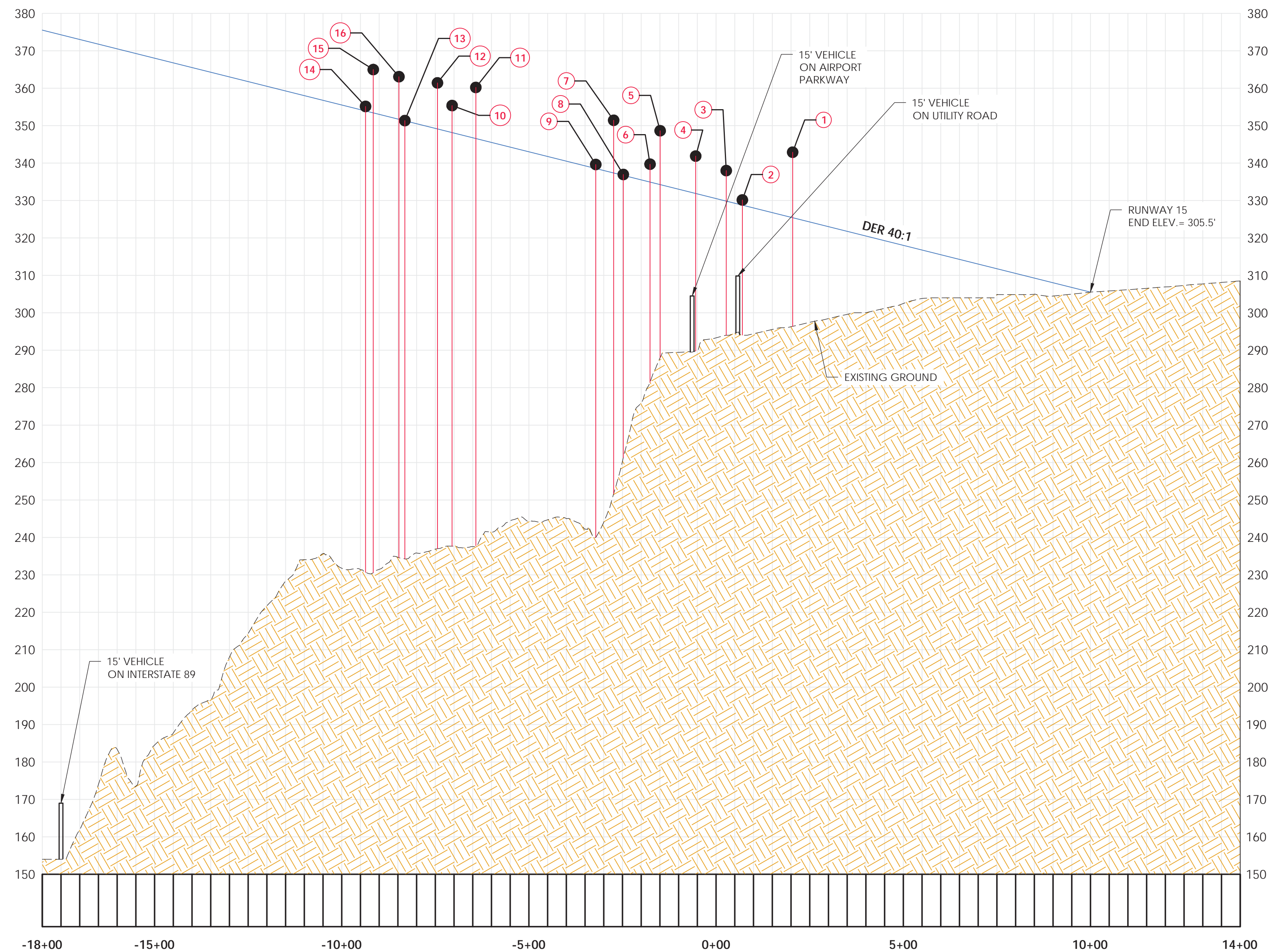
### DER For Runway 33

Airport Layout Plan Update  
**Burlington International Airport (BTV)**  
Town/City: South Burlington  
County: CHITTENDEN State: Vermont

Project No.  
**20150403.0002**

Drawing No.  
**13B**

Date  
**January 2021**



#### DER RUNWAY 15 PROFILE

SCALE: HORIZONTAL - 1" = 200'  
VERTICAL - 1" = 10'

#### (DER) DEPARTURE END SITING SURFACE

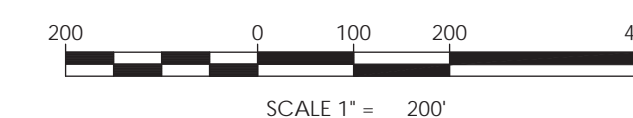
ID	DESCRIPTION	OBJECT ELEVATION	SURFACE HEIGHT ALLOWED	40:1 DER Penetration	ON/OFF AIRPORT	DISPOSITION
1	BUILDING	342.9	325.4	17.5	ON	LIGHT OR MARK
2	TREE	330.2	328.8	1.4	OFF	TRIM OR REMOVE
3	POLE	338.0	329.9	8.1	OFF	LIGHT OR MARK
4	TREE	341.9	331.9	10.0	OFF	TRIM OR REMOVE
5	TREE GROUP	348.7	334.3	14.4	OFF	TRIM OR REMOVE
6	TREE	339.7	334.9	4.8	OFF	TRIM OR REMOVE
7	TREE	351.4	337.4	14.0	OFF	TRIM OR REMOVE
8	TREE	337.0	336.7	0.3	OFF	TRIM OR REMOVE
9	TREE	339.6	338.6	1.0	OFF	TRIM OR REMOVE
10	TREE	355.4	348.1	7.3	OFF	TRIM OR REMOVE
11	TREE GROUP	360.2	346.6	13.6	OFF	TRIM OR REMOVE
12	TREE	361.4	349.2	12.2	OFF	TRIM OR REMOVE
13	TREE	351.4	351.3	0.1	OFF	TRIM OR REMOVE
14	TREE	355.2	353.9	1.3	OFF	TRIM OR REMOVE
15	TREE	365.0	353.4	11.6	OFF	TRIM OR REMOVE
16	TREE	363.1	351.7	11.4	OFF	TRIM OR REMOVE

#### DER SURFACE

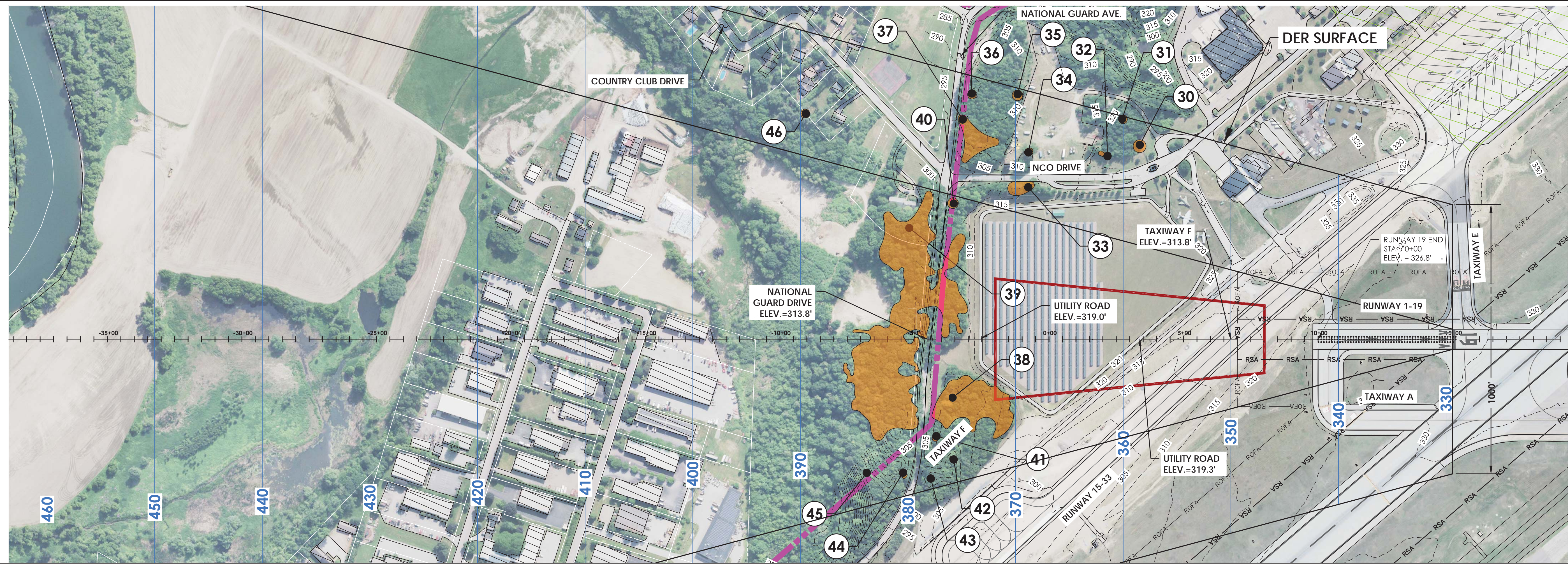
TYPE 7	FROM RUNWAY END	INNER WIDTH	OUTER WIDTH	DISTANCE	SLOPE
DER	0'	1000'	6,466'	10,200'	40:1

#### NOTES:

- OBSTACLE DATA SOURCE, WOOLPERT SURVEY, 2019.
- "ALL OBJECT ELEVATIONS ARE CURRENT AS OF THIS ALP UPDATE AND ARE SUBJECT TO CHANGE."
- DER SET BY DECLARED DISTANCES AND BASED ON EB99 AT THE TIME . SOME PENETRATIONS SHOWN MAY NOT BE PENETRATIONS TO THE REVISED SURFACE PER EB99A, TABLE 3-2, TYPE 7.



Stamp:



NOTES:

1. OBSTACLE DATA SOURCE, WOOLPERT SURVEY, 2019.
2. "ALL OBJECT ELEVATIONS ARE CURRENT AS OF THIS ALP UPDATE AND ARE SUBJECT TO CHANGE."
3. DER SET BY DECLARED DISTANCES AND BASED ON EB99 AT THE TIME, TABLE 3-2, TYPE 7.
4. PENETRATIONS SHOWN MAY NOT BE PENETRATIONS TO REVISED SURFACE IN EB99A.

SOURCE: WOOLPERT AERIAL PHOTO, 2018  
DER, LINE 7, TABLE 3-2 OF AC 150-5300-13a

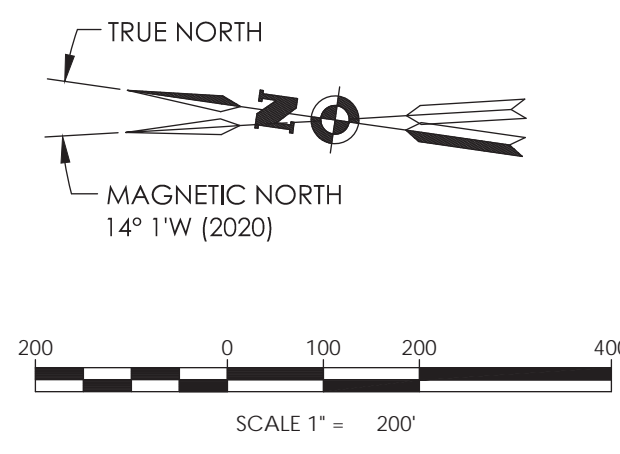
DER SURFACE					
TYPE 7	FROM DISPLACED THRESHOLD	INNER WIDTH	OUTER WIDTH	DISTANCE	SLOPE
DER	0'	1000'	6,466'	10,200'	40:1

(DER) DEPARTURE END SITING SURFACE

NOTE:

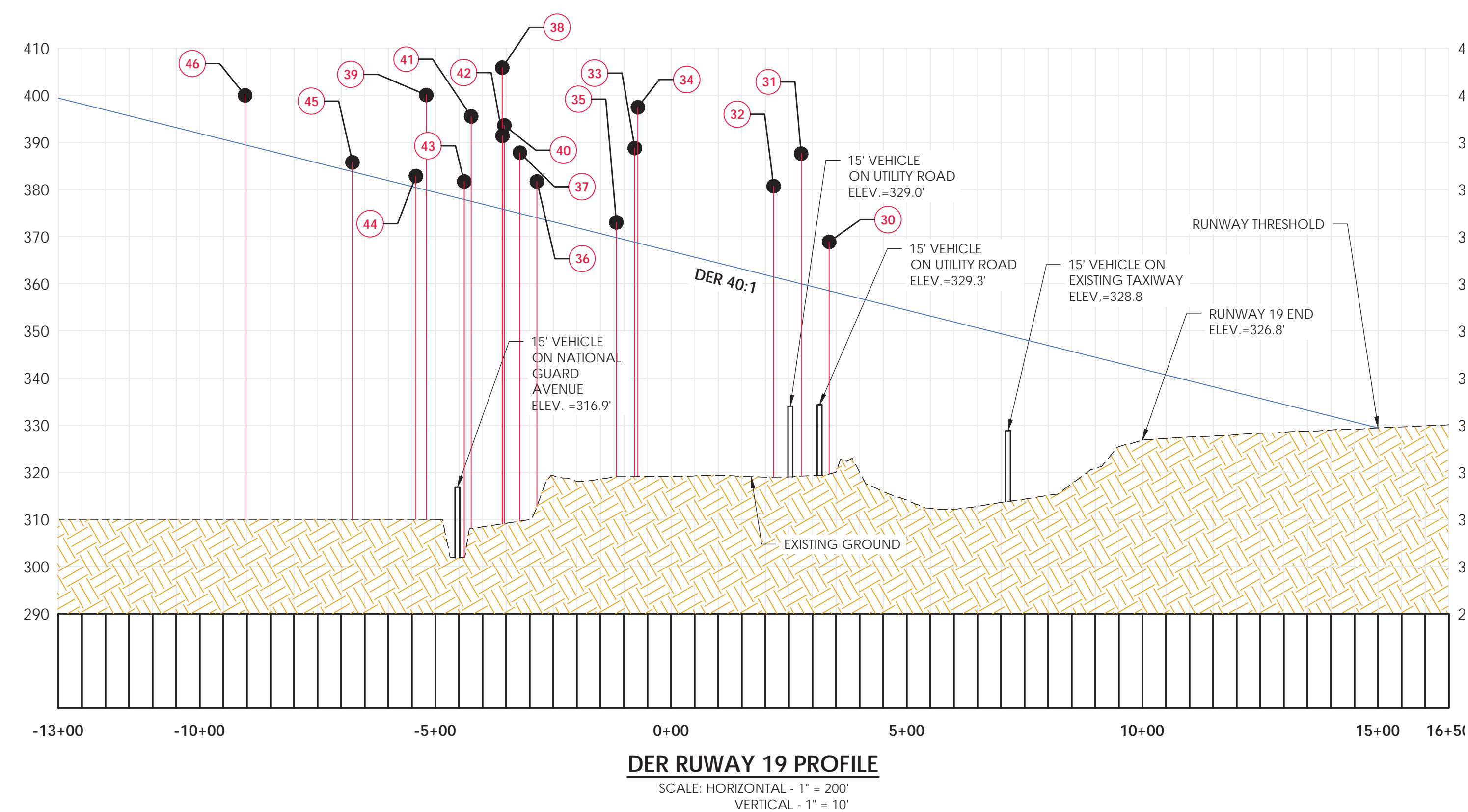
SOME PENETRATIONS MAY NOT BE PENETRATIONS TO THE REVISED DER SURFACE IN EB99A.

ID	DESCRIPTION	OBJECT ELEVATION	SURFACE HEIGHT ALLOWED	40:1 DER Penetration	ON/OFF AIRPORT	DISPOSITION
30	TREE	368.9	358.5	10.4	ON	TRIM OR REMOVE
31	TREE	387.6	360.1	27.5	ON	LIGHT OR MARK
32	TREE GROUP	380.7	361.5	19.2	OFF	TRIM OR REMOVE
33	TREE GROUP	397.4	368.8	28.6	OFF	TRIM OR REMOVE
34	TREE GROUP	387.8	358.8	29.0	OFF	TRIM OR REMOVE
35	TREE	373.0	369.8	3.2	OFF	TRIM OR REMOVE
36	TREE	381.7	374.2	7.5	OFF	TRIM OR REMOVE
37	TREE GROUP	387.8	374.9	12.9	OFF	TRIM OR REMOVE
38	TREE GROUP	405.8	375.9	29.9	OFF	TRIM OR REMOVE
39	TREE GROUP	400.0	379.9	20.1	OFF	TRIM OR REMOVE
40	TREE	393.6	375.7	17.9	OFF	TRIM OR REMOVE
41	TREE	395.5	377.5	18.0	OFF	TRIM OR REMOVE
42	TREE	391.4	375.8	15.6	OFF	TRIM OR REMOVE
43	TREE	381.7	377.9	3.8	OFF	TRIM OR REMOVE
44	TREE GROUP	382.9	380.5	2.4	OFF	TRIM OR REMOVE
45	TREE	385.8	383.8	2.0	OFF	TRIM OR REMOVE
46	TREE	400	389.6	10.4	OFF	TRIM OR REMOVE



LEGEND:

- AIRPORT PROPERTY LINE
- EXISTING RPZ
- OBSTRUCTION
- TREE CLUSTER



DER RUWAY 19 PROFILE  
SCALE: HORIZONTAL - 1" = 200'  
VERTICAL - 1" = 10'

Client:  
**BURLINGTON INTERNATIONAL AIRPORT**  
1200 Airport Drive  
South Burlington, VT 05403

**Passero Associates**  
242 W. Main Street  
Rochester, NY 14614  
(585) 325-1000  
Fax: (585) 325-1691  
Principal-in-Charge: Andrew Holesko  
Project Manager: Lisa Chueng  
Designed by: Wayne Zian

Revisions			
No.	Date	By	Description

Existing DER For Runway 19

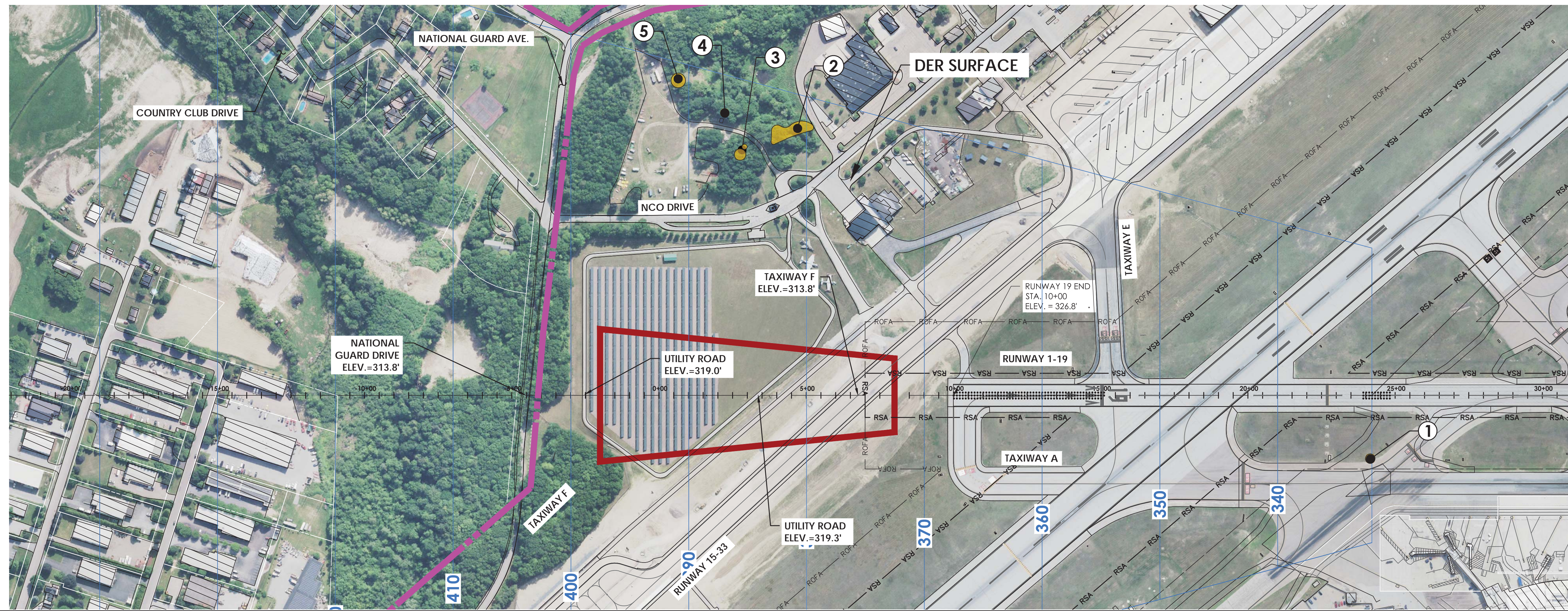
Airport Layout Plan Update  
**Burlington International Airport (BTV)**  
Town/City: South Burlington  
County: CHITTENDEN State: Vermont

Project No.  
20150403.0002

Drawing No.  
14

Date  
January 2021

Stamp:



SOURCE: WOOLPERT  
AERIAL PHOTO, 2018  
DER, LINE 7, TABLE 3-2  
OF AC 150-5300-13a

NOTES:

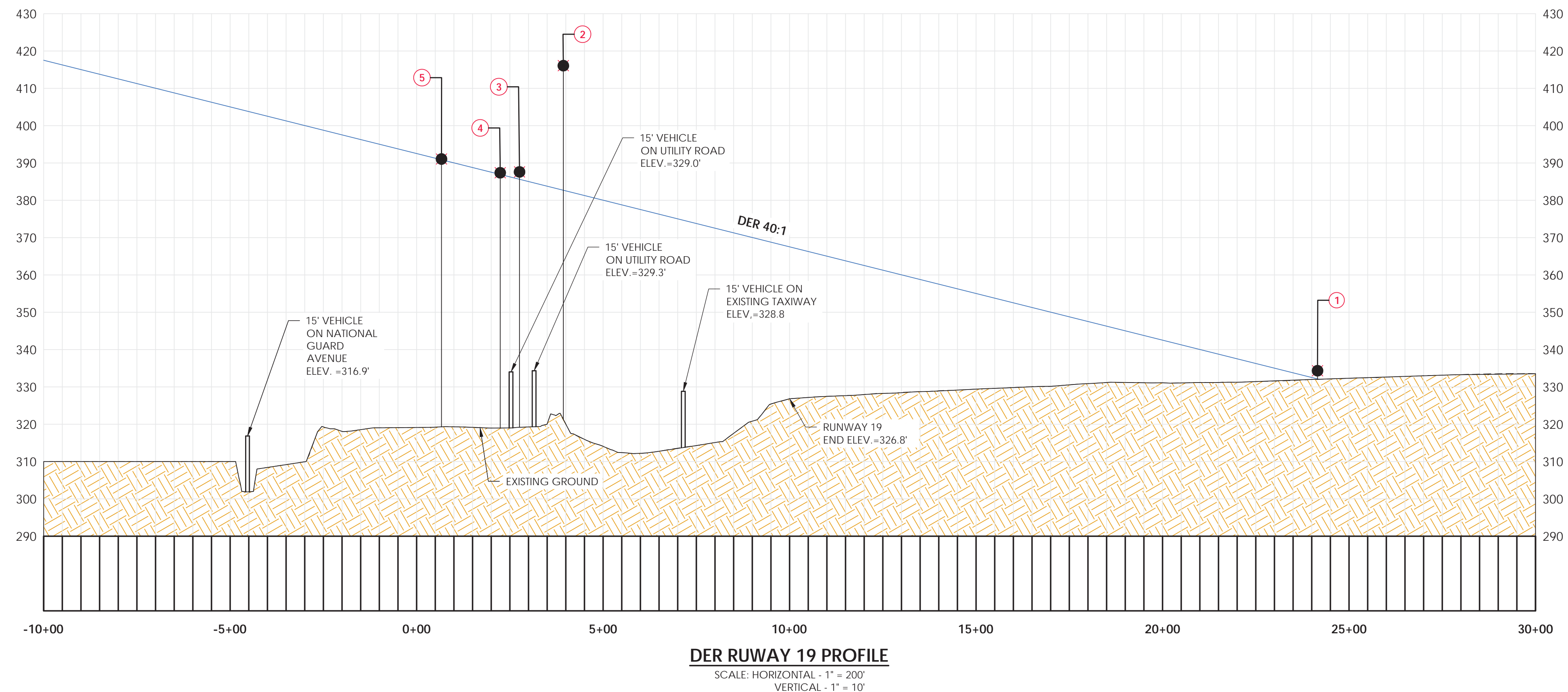
1. OBSTACLE DATA SOURCE, WOOLPERT SURVEY, 2019.
2. "ALL OBJECT ELEVATIONS ARE CURRENT AS OF THIS ALP UPDATE AND ARE SUBJECT TO CHANGE."
3. DER SET BY DECLARED DISTANCES. SOME PENETRATIONS MAY NOT BE PENETRATIONS TO TH REVISED SURFACE IN EB99A, TABLE 3-2, TYPE 7.

DER SURFACE

TYPE 7	FROM DISPLACED THRESHOLD	INNER WIDTH	OUTER WIDTH	DISTANCE	SLOPE
DER	0'	1000'	6,466'	10,200'	40:1

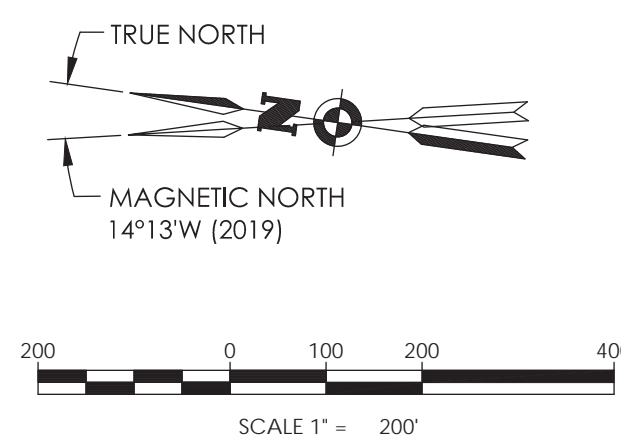
(DER) DEPARTURE END SITING SURFACE

ID	DESCRIPTION	OBJECT ELEVATION	SURFACE HEIGHT ALLOWED	40:1 DER Penetration	ON/OFF AIRPORT	DISPOSITION
1	SIGN	334.3	332.2	2.2	ON	FIXED BY FUCTION
2	TREE GROUP	416.1	382.7	33.4	ON	TRIM OR REMOVE
3	TREE GROUP	387.6	385.6	2.0	ON	TRIM OR REMOVE
4	TREE	387.4	386.9	0.5	ON	TRIM OR REMOVE
5	TREE	391.1	390.8	0.2	ON	TRIM OR REMOVE



LEGEND:

- AIRPORT PROPERTY LINE
- EXISTING RPZ
- OBSTRUCTION
- TREE CLUSTER



Client:  
**BURLINGTON INTERNATIONAL AIRPORT**  
1200 Airport Drive  
South Burlington, VT 05403

**Passero Associates**  
242 W. Main Street  
Rochester, NY 14614  
(585) 325-1000  
Fax: (585) 325-1691  
Principal-in-Charge: Andrew Holesko  
Project Manager: Lisa Chueng  
Designed by: Wayne Zian

Revisions			
No.	Date	By	Description

UNAUTHORIZED ALTERATIONS OR ADDITIONS TO THIS DRAWING IS IN VIOLATION OF STATE EDUCATION LAW ARTICLE 145 SECTION 7309 AND ARTICLE 147 SECTION 7307. THESE PLANS ARE COPYRIGHT PROTECTED ©

**Proposed DER Runway 1**

Airport Layout Plan Update  
**Burlington International Airport (BTV)**  
Town/City: South Burlington  
County: CHITTENDEN State: Vermont  
Project No. 20150403.0002  
Drawing No. 14A  
Date January 2021